

Bonhams

A large, multi-story stone house with a covered porch, surrounded by a stone-paved courtyard and large trees. The house features a prominent stone chimney and a gabled roof. The courtyard is paved with large, irregular stone tiles and is bordered by a low stone wall. Several tall, thin evergreen trees are planted in the courtyard. The scene is set against a clear blue sky.

The Contents of a Virginian Country House The Collection of Eric Steiner

Los Angeles | October 10, 2019



The Contents of a Virginian Country House The Collection of Eric Steiner

Los Angeles | Thursday October 10, 2019, 10am

BONHAMS

7601 W. Sunset Boulevard
Los Angeles, California 90046
bonhams.com

PREVIEW

Friday, October 4, 12-5pm
Saturday, October 5, 12-5pm
Sunday, October 6, 12-5pm
Monday, October 7, 12-5pm
Tuesday, October 8, 12-5pm
Wednesday, October 9, 12-5pm

SALE NUMBER: 25798

Lots 1 - 291

CATALOG: \$35

**ALL LOTS UNDER \$5000 TO
BE OFFERED FOR SALE
WITHOUT RESERVE.**

**Lots not illustrated in the
catalogue are available to view at
bonhams.com/25798**

BIDS

+1 (323) 850 7500
+1 (323) 850 6090 fax
bids.us@bonhams.com

To bid via the internet please visit
www.bonhams.com/25798

Please note that telephone bids
must be submitted no later than
4pm on the day prior to the
auction. New bidders must also
provide proof of identity and
address when submitting bids.

LIVE ONLINE BIDDING IS AVAILABLE FOR THIS SALE

Please email bids.us@bonhams.com
with "Live bidding" in the
subject line **48hrs** before the
auction to register for this service.

Bidding by telephone will only be
accepted on a lot with a lower
estimate in excess of \$1000

Please see pages 159 to 163
for bidder information including
Conditions of Sale, after-sale
collection and shipment.

INQUIRIES

Head of Sale
Anna Hicks
Furniture
+1 (323) 436 5463
anna.hicks@bonhams.com

Angela Past
Decorative Arts
+1 (323) 436 5422
angela.past@bonhams.com

Sharon Squires
Contemporary Art
+1 (323) 436 5404
sharon.squires@bonhams.com

Rocco Rich
Paintings
+1 (323) 436 5410
rocco.rich@bonhams.com

Morisa Rosenberg
Prints & Multiples
+1 (323) 436 5435
morisa.rosenberg@bonhams.com

Joe Antone
Administration
+1 (323) 436 5428
joe.antone@bonhams.com

Cassandra McCook
Administration
+1 (323) 436 5434
cassandra.mccook@bonhams.com

PROPERTY COLLECTION NOTICE

This sale previews in multiple cities.
Please note the property will be
available for collection at our Los
Angeles gallery at the time of the
auction. Local, out-of-state and
international buyer property will
remain available for collection in
our Los Angeles gallery after the
auction. All Northern California
buyer property will be shipped to
our San Francisco gallery for
collection. Please contact the
department or cashiers with
inquiries or shipping requests.

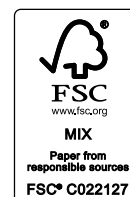
REGISTRATION IMPORTANT NOTICE

Please note that all customers,
irrespective of any previous activity
with Bonhams, are required to
complete the Bidder Registration
Form in advance of the sale. The
form can be found at the back of
every catalogue and on our website
at www.bonhams.com and should
be returned by email or post to the
specialist department or to the bids
department at
bids.us@bonhams.com

To bid live online and / or leave
internet bids please go to
[www.bonhams.com/
auctions/25798](http://www.bonhams.com/auctions/25798) and click on the
Register to bid link at the top left of
the page.

ILLUSTRATIONS

Inside front cover: Lot 286
Inside back cover: Lot 286
Back cover: Lot 291



Bonhams

220 San Bruno Avenue
San Francisco, California 94103
© 2019, Bonhams & Butterfields
Bond No. 57BSBGL0808
Auctioneers Corp.; All rights reserved.

Sale Information

BOX PACK & SHIP

3800 S. Main Street
Los Angeles
CA 90037

CONTACT INFORMATION

800.674.4705
bonhamsla@boxpackship.net
Please provide sale no. lot no.
and shipping information when
emailing requests

HOURS

Monday - Friday 9am 4pm

*Saturday Retrieval: can be
scheduled by appointment at an
extra \$25/lot.*

FEES AND PICK UP INFORMATION

Please note all following lots,
marked with the symbol '**W**' in
the catalogue, will be removed to
Box Pack & Ship, if not removed
on the day of the sale. Box
Pack & Ship will charge an uplift
fee to transport items to their
warehouse. Small items that can
be handled easily by one person
will be charged \$50. Larger
items that can still be handled
by one person will be charged
\$85. Large items that require two
people to handle will be charged
\$100. Charges will be payable
directly to Box Pack & Ship.

During this auction, clients will be
expected to pick up all property
from Bonhams by 5pm on Friday
October 11, 2019. Clients can
begin picking up from Box, Pack
and Ship on October 16, 2019,
9am.

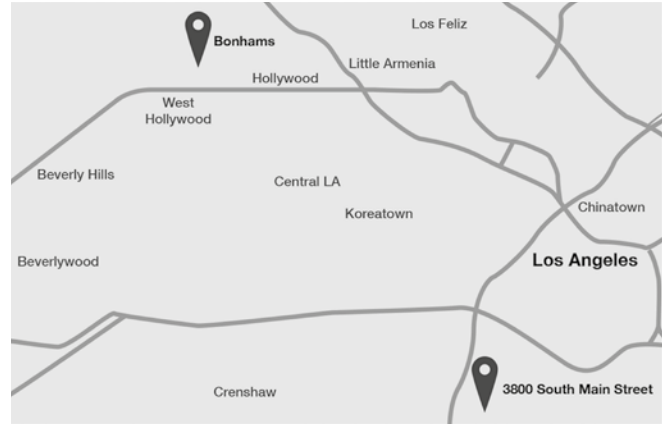
If you ship with us, we will waive
the pickup and handling fees.
Storage costs of \$5.00 per lot,
per day, will also take effect after
the five day grace period expires
from time of collection.

Retrieval is subject to Bonhams
Terms and Conditions.

If you choose to have your own
carrier pick these up from us, the
pickup fee of \$50 per lot,
fuel of \$5.00 per lot per day and
a handling fee of \$45 per lot is
payable prior to retrieval.

*Please Note: 24 Hour notice
is required to pull lots prior to
retrieval.*

Please refer to p163 for oversized
lot list for offsite sold property
storage information.



LOTS TO BE REMOVED TO STORAGE:

1	95
2	96
3	99
4	153
6	155
7	156
10	157
37	158
38	159
39	160
40	161
41	162
42	163
44	164
55	165
56	166
57	167
60	169
61	170
62	174
64	175
65	230
66	233
67	234
81	260
87	272
88	273
89	278
90	279
91	280
92	281
93	282
94	





Foreword

Having had the privilege of designing interiors for some of England's finest country houses, the prospect of building a collection on the other side of the pond with the Steiner family at their beloved 'Hut' in Upperville Virginia was tantalising. The Steiners are well known for their love of fine art, and like all great collectors, their interests are not bound by strict artistic periods or movements.

With its capacious dining room and vast music room complete with full size organ, set within a myriad of towers and turrets, 'The Hut' as the family refer to it, is a charming amalgam of Classical grandeur and Gothic charm set on the picturesque foothills of the Blue Ridge Mountains.

My brief was an ambitious one: to find exceptional items to complement the family's existing collection. The challenge was to discover statement pieces which would complement the colossal scale of the principal rooms. Originally created for similar grand scale European residences, the monumental Italian giltwood mirrors (lot 87), the lion hunt After Rubens (lot 60), and rare English pollard oak dining table (lot62) provided the Hut with the required size and impressive spectacle.

Whilst many of my most important schemes have their foundations planted squarely in the grand tour classical tradition, the most memorable combine this with an unquantifiable mix of the playful, intriguing and sometimes thought-provoking. The Steiners certainly shared this philosophy, and the blend of old master paintings in the Bonhams sale alongside the shock of the new contemporary works is masterfully handled.

It has been a huge pleasure to be involved in this remarkable collection over the years. Bonhams catalogue beautifully captures the essence of the collection, encapsulating the passion and interests of the Steiner family.

Christopher Hodson, September 2019







1

1 W

A JAPANESE SIX PANEL SCREEN

Meiji Period

Ink, color and gold foil.

height 69in (175cm); width of each panel 23 2/3in (60cm)

\$1,000 - 1,500

£830 - 1,200

2 W

A VICTORIAN LEATHER UPHOLSTERED MAHOGANY PORTER'S CHAIR

Late 19th century

The button tufted back above an upholstered seat over two paneled doors and a plinth base.

height 67 1/2in (172cm); width 34 1/2in (88cm); depth 34in (87cm)

\$3,000 - 5,000

£2,500 - 4,200



2







3 W

AN UPHOLSTERED BRASS CLUB FIRE FENDER

20th century

height 23 1/5in (60cm); width 62 1/2in (160cm); depth 20 1/2in (53cm)

\$500 - 700

£420 - 580

4 W

AN UPHOLSTERED DAYBED

Late 20th century

height 36 1/2in (93cm); width 62 1/2in (160cm); depth 29 1/2in (93cm)

\$1,000 - 1,500

£830 - 1,200

5

TWO AFRICAN MAASAI WOOD AND METAL SPEARS

length of larger 82in (208cm); other length 77in (195cm)

\$500 - 800

£420 - 670

6 W

A VENETIAN POLYCHROME AND GILT DECORATED CARVED WOOD FIGURAL TORCHÈRE

Late 19th century

The base inscribed *Daveante*.

height 58in (147cm); width 22in (56cm); depth 19 3/4in (50cm)

\$1,500 - 2,000

£1,200 - 1,700

Provenance

Stair's Incurable Collector, New York, New York, September 1983

7 W

A LARGE SET OF STAG ANTLERS

height 51in (130cm); width 37in (94cm); depth 20in (51cm),/i>

\$600 - 800

£500 - 670

8

A CONTINENTAL BAROQUE STYLE PAINTED AND GILTWOOD MIRROR

Late 19th century

The back inscribed with the date 1883.

diameter 29in (74cm)

\$800 - 1,200

£670 - 1,000

9

A CONTINENTAL PLASTER LION MASK

19th century

height 17 1/2in (44cm); width 19in (48cm)

\$500 - 800

£420 - 670

10 W

TWO CONTINENTAL CARVED WOOD FIGURAL WALL APPLIQUES

Early 20th century

height 32in (81cm); width 20in (51cm); height 29in (74cm); width 21in (53.5cm)

\$600 - 800

£500 - 670

6





9





11

11

A SAVONNERIE CARPET

*dimensions approximately 22ft 6in x 15ft 10in
(700cm x 480cm)*

\$2,000 - 3,000

£1,700 - 2,500



12

12

A TABRIZ SILK PRAYER RUG

20th century

*dimensions approximately 5ft 6in x 4ft 1/2in (167cm
x 125cm)*

\$1,500 - 2,000

£1,200 - 1,700



13

A SILK PRAYER RUG

20th century

dimensions approximately 5ft 6in x 4ft (168cm x 122cm)

\$600 - 800

£500 - 670



13

14

A TABRIZ SILK PRAYER RUG

20th century

dimensions approximately 5ft 6in x 4ft 5in (171cm x 134cm)

\$1,500 - 2,000

£1,200 - 1,700



14





16

15
A MAHAL CARPET

Late 19th century
 dimensions approximately 13ft 10in x 10ft 6in (424cm x 320cm)

\$1,000 - 1,500
£830 - 1,200

16
ARMSTRONG, GEORGE.

Raised Map of Palestine, Constructed from the Surveys of the Palestine Exploration Fund and Other Sources... London: Palestine Exploration Fund, [1909, but likely later]. Painted plaster relief model housed in oak shadow box, 113 x 85 x 11 cm, featuring printed cartouche at upper left corner and identifying labels throughout. Mounted with a presentation plaque for the Bristol Baptist College, some wear to surface.

A model of Palestine created by the Palestine Exploration Fund to be sold to schools, churches, and other institutions. See Rehav Rubin, "Relief Maps and Models in the Archives of the Palestine Exploration Fund in London" in *Palestine Exploration Quarterly* 138, 1 (2006), pp 43-63.

\$1,000 - 2,000
£830 - 1,700

17
AN USHAK CARPET

20th century
 dimensions approximately 18ft 6in x 19ft 7in (550cm x 590cm)

\$700 - 1,000
£580 - 830

18
A MAHAL CARPET

Late 19th century
 dimensions approximately 11ft 5in x 9ft 7in (350cm x 286cm)

\$600 - 800
£500 - 670

19
SULTANABAD CARPET

20th century
 dimensions approximately 13ft 2in x 9ft 9in (424cm x 302cm)

\$2,000 - 4,000
£1,700 - 3,300







20

20

M.B. COHANE

Portrait of Anne Archbold

signed 'M.B. Cohane' (lower left)

oil on canvas

16 1/4 x 20 in.

41.3 x 50.8 cm.

\$400 - 600

£330 - 500

Anne Archbold was the daughter of John Dustin Archbold, who had been one of John D Rockefeller's principal associates in Standard Oil. She was a world traveler, with houses in England, Maine, Nassau, Washington DC and The Hut in Upperville, part of Foxlease Farm, which passed on to her son John D. Archbold upon her death in 1968. John D Archbold is remembered as a conservationist and host to many concerts in the Hut's music room.

21

SWISS SCHOOL (19TH CENTURY)

A mountainous landscape with a church and village in the foreground

oil on canvas

42 x 54in (106.7 x 137.2cm)

\$2,000 - 3,000

£1,700 - 2,500



21



22

LOUIS JOSEPH CAZABAN (FRENCH, 19TH CENTURY)

An elegant lady in a green floral dress seated beside a table with flowers
signed 'L. Cazaban' (lower center right)

oil on canvas

73 x 61in (185.5 x 155cm)

\$2,000 - 3,000

£1,700 - 2,500

23

JOSE ANTONIO VELASQUEZ (HONDURAN, 1906-1985)

Honduras C. A., 1952 (2)

(i): signed, inscribed and dated 'JAVELASQUEZ / Honduras C. A. 1952'
(lower right)

(ii): signed, inscribed and dated 'JAVELASQUEZ / Honduras C. A. 1952'
(lower left)

Each: oil on canvas

(i): 20 x 25 in. (50.8 x 63.5 cm.)

(ii): 25 x 20 in. (63.5 x 50.8 cm.)

\$500 - 800

£420 - 670



22

24

ETHEL GITTLIN (B. 1970)

En face de la mer, 2004

signed twice 'E. Gittlin' (on the overlap); signed and dated (on the reverse)

oil on canvas

42 x 48 in.

106.7 x 121.9 cm.

\$500 - 800

£420 - 670

Provenance

Walter Wickiser Gallery, New York

Acquired directly from the above by the present owner in 2004

25

FRANK HENRY MASON (BRITISH, 1875-1965)

Wings of Dawn

signed and dated 'Frank.H.Mason / 1937' (lower right); inscribed as titled
(on the reverse)

oil on board

16 x 12in (40.7 x 30.5cm)

\$1,000 - 1,500

£830 - 1,200

Provenance

Marine and Collections, New York.



25





26

26

ÉDOUARD ADAM (FRENCH, 1847-1929)

The steamship *Liamone* at sea
signed and dated 'Teddy Adam. 1906' (lower right)
oil on canvas

24 1/2 x 36 1/4in (62.2 x 92.1cm)

\$2,000 - 3,000

£1,700 - 2,500



27

27

ATTRIBUTED TO ÉDOUARD ADAM (FRENCH, 1847-1929)

Pauline leaving port
oil on canvas

24 1/2 x 36in (62.3 x 91.5cm)

unframed

\$5,000 - 8,000

£4,200 - 6,600



28

ÉDOUARD ADAM (FRENCH, 1847-1929)

Andre Blanc

signed and dated 'Ed. Adam. 1916' (lower right)

oil on canvas

23 3/8 x 35 1/4in (59.4 x 89.6cm)

\$2,000 - 3,000

£1,700 - 2,500



28

29

E. FAVERO (ITALIAN, 20TH CENTURY)

A view of Constantinople from across the Bosphorus

signed, indistinctly inscribed and dated 'E. Favero

S... / Constantinople 1901' (lower right)

oil on canvas

10 1/8 x 20in (25.7 x 50.8cm)

\$800 - 1,200

£670 - 1,000



29

30

A GROUP OF ART REFERENCE BOOKS

Approximately 40 books,

\$300 - 500

£250 - 420





31

31
FOLLOWER OF JAN JOSEFSZ VAN GOYEN (DUTCH, 1596-1656)

Figures repairing a boat
oil on panel
8 1/4 x 10 3/4in (21 x 27.3cm)

\$2,500 - 3,500
£2,100 - 2,900



32

32
GERMAN SCHOOL (19TH CENTURY)

Figures merry-making; and a companion painting (a pair)
both oil on metal
each 8 3/8 x 9 7/8in (21.3 x 25.1cm)

\$2,000 - 3,000
£1,700 - 2,500





33

NORTH ITALIAN SCHOOL (18TH CENTURY)

An extensive landscape with a traveler resting near a bridge
bears signature 'Calzolari' (lower left)

oil on canvas

27 1/8 x 39 1/2in (68.9 x 100.3cm)

\$4,000 - 6,000

£3,300 - 5,000





34

34
**A PAIR OF CONTINENTAL PARCEL GILT BRONZE
 ARTICULATED FIGURAL CANDLESTICKS**

19th century
 Each figure striking a bell.
height 11in (28cm); diameter 5 3/4in (14cm)

\$1,000 - 2,000
£830 - 1,700

35
A CONTINENTAL MARBLE ARCHITRAVE

Probably Italian, 19th century
height 20in (50cm); width 11 1/2in (29cm); depth 7 1/2in (19cm)

\$1,000 - 1,500
£830 - 1,200



35



36

36
**A NORTH ITALIAN BRECCIA AND CARRARA
 CARVED MARBLE RELIEF TABLET OF A BEAR
 EATING HONEY**

19th century
height 9in (24cm); width 18 1/2in (47cm); depth 1in (3cm)

\$1,200 - 1,800
£1,000 - 1,500







37

37 W

**AN IRISH GEORGE III CROSSBANDED
MAHOGANY DINING TABLE**

Early 19th century

height 27 1/2in (71cm); diameter 67 1/2in (172cm)

\$800 - 1,200

£670 - 1,000

38 W

A GEORGE III MAHOGANY TRIPOD TABLE

Late 18th century

The octagonal top raised on a fluted column supported by downswept legs.

height 29 1/2in (75cm); diameter 29in (74cm)

\$1,000 - 1,500

£830 - 1,200

Please note a similar George III tripod table attributed to Thomas Chippendale sold on ThePedestal.com, Online Sales and Auctions, lot 95, for £30,000.



38







39

39 W

**A LARGE COMPOSITION STONE FIGURE
OF A RECUMBENT LION**

On a plinth base.

height 40 1/2in (103cm); width 26 1/2in (68cm);
depth 16 1/2in (42cm)

\$3,000 - 5,000
£2,500 - 4,200



40

40 W

**A NEOCLASSICAL STYLE MARBLE
CONSOLE**

20th century

height 35in (88cm); width 83in (210cm);
depth 19 1/2in (49cm)

\$1,200 - 1,800
£1,000 - 1,500







41

41 W
**A MONUMENTAL ITALIAN CARVED PAINTED AND GILTWOOD
 COAT OF ARMS**

18th century
 height 38 1/2in (98cm); width 83in (210cm)

\$4,000 - 6,000
 £3,300 - 5,000

42 W
**AN EMPIRE NEEDLEPOINT UPHOLSTERED MAHOGANY
 SETTEE**

19th century
 height 37 1/2in (95cm); width 71in (180cm); depth 27 1/2 (69cm)

\$1,000 - 1,500
 £830 - 1,200

43
A NEOCLASSICAL STYLE GILTWOOD TRUMEAU

Late 19th century
 height 51 1/2in (130cm); width 27 1/2in (69cm)

\$500 - 700
 £420 - 580

44 W
A PAIR OF GILTWOOD AND GESSO PIER MIRRORS

Late 19th/early 20th century
 height 62 1/2in (158cm); width 28 1/2in (73cm)

\$2,000 - 3,000
 £1,700 - 2,500





43



44



42





45

45
JOHN TRIVETT NETTLESHIP (BRITISH, 1847-1902)

A wolf on the move
signed and dated 'JNettleship / 1901' (lower right)
oil on canvas
48 x 33 1/2in (121.9 x 85.1cm)

\$3,000 - 5,000
£2,500 - 4,200

46
UNKNOWN ARTIST

Untitled, 1971
signed with initials and dated 'TTP 79' (lower right)
oil on board
32 x 39 1/4 in.
81.3 x 100 cm.

\$500 - 800
£420 - 670



47

FRANZ ROH (B. 1890-1965)

Teufliches Riff

initialed 'F. R.' (lower left) and titled 'Teufliches Riff'
(on the reverse)
engraving collage
8 7/8 x 12 3/4 in.
22.5 x 32.5 cm.

\$2,000 - 3,000
£1,700 - 2,500

Provenance

The Mayor Gallery, London



47

48

NACHUM GUTMAN (1898-1978)

Arab Girls

inscribed in Hebrew (lower right);
inscribed again in Hebrew (on the reverse)
Indian ink and pastel on paper
7 1/4 x 11 5/8 in.
18.4 x 29.5 cm.

\$1,000 - 1,500
£830 - 1,200



48

49

NACHUM GUTMAN (1899-1978)

A Woman in the Pond

blind stamped with signature 'Atcher Nachum Gutman'
(lower right); signed and titled 'A Woman in the Pond'
Nachum Gutman' (on the reverse)
India ink on paper
13 x 8 1/8 in.
33 x 20.6 cm.

\$800 - 1,200
£670 - 1,000



49





50 (from a set of twenty five)

50

VARIOUS ARTISTS

A Set of 25 Hand Colored Engravings of European Figures, Engravings, with hand coloring, on paper, with margins, each framed. (25)

Each Frame approx. 17 1/2 x 13 3/8in (44.5 x 34cm)

\$2,000 - 3,000

£1,700 - 2,500

51

STANLEY BATE (AMERICAN, 1903-1972)

A snow-covered landscape signed and dated 'Stanley Bate 32' (lower right) oil on board

16 x 20in (40.6 x 50.8cm)

\$300 - 500

£250 - 420

52

M.B. COHANE

A quiet cove signed, inscribed and dated 'M. Browne Cohane / For my friend John A. / July '57 / MB' (lower right)

oil on canvas 25 x 30in (63.5 x 76.3cm)

\$500 - 800

£420 - 670





50

53

A MAP OF THE HOLY LAND

HOMANN, JOHANN BAPTIST. *Iudaea seu Paaestina ob Sacratissima Redmtoris Vestigia Hodie Dicta Terra Sancta....* Nuremberg: c.1707. Copper-engraved map, 560 x 480 mm, with hand coloring. Cartouche at upper left corner featuring Moses accepting the ten commandments and another at lower right featuring Moses, Aaron, and the two spies of Moses bearing a bunch of grapes. Framed and glazed.

\$300 - 500
£250 - 420

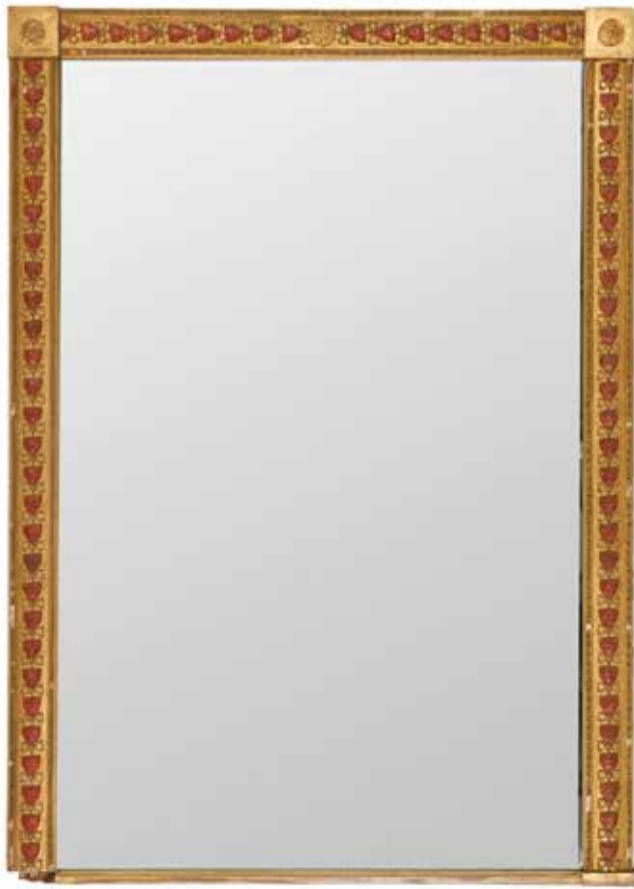
54

JEAN-JACQUES RENÉ (FRENCH, BORN 1943)

Dans le salon
signed 'Jean Jacques René' (lower left); inscribed as titled and dated 'Le 19 décembre 1973' (on the reverse)
oil on canvas
21 5/8 x 18in (55 x 45.8cm)

\$300 - 500
£250 - 420





55

55 W

**A NEOCLASSICAL STYLE GILTWOOD
AND COMPOSITION OVERMANTEL MIRROR**

Late 19th century

height 98 1/2in (251cm); width 70 1/2in (180cm)

\$2,500 - 3,500

£2,100 - 2,900

56 W

**A GEORGE III STYLE MARBLE TOP
PAINTED CONSOLE**

20th century

height 37 1/2in (95cm); width 71 1/2in (182cm); depth
20in (52cm)

\$1,500 - 2,500

£1,200 - 2,100



56





57 W

**A PAIR OF NEOCLASSICAL STYLE MARBLE TOP
PARCEL GILT POLLARD OAK CABINETS**

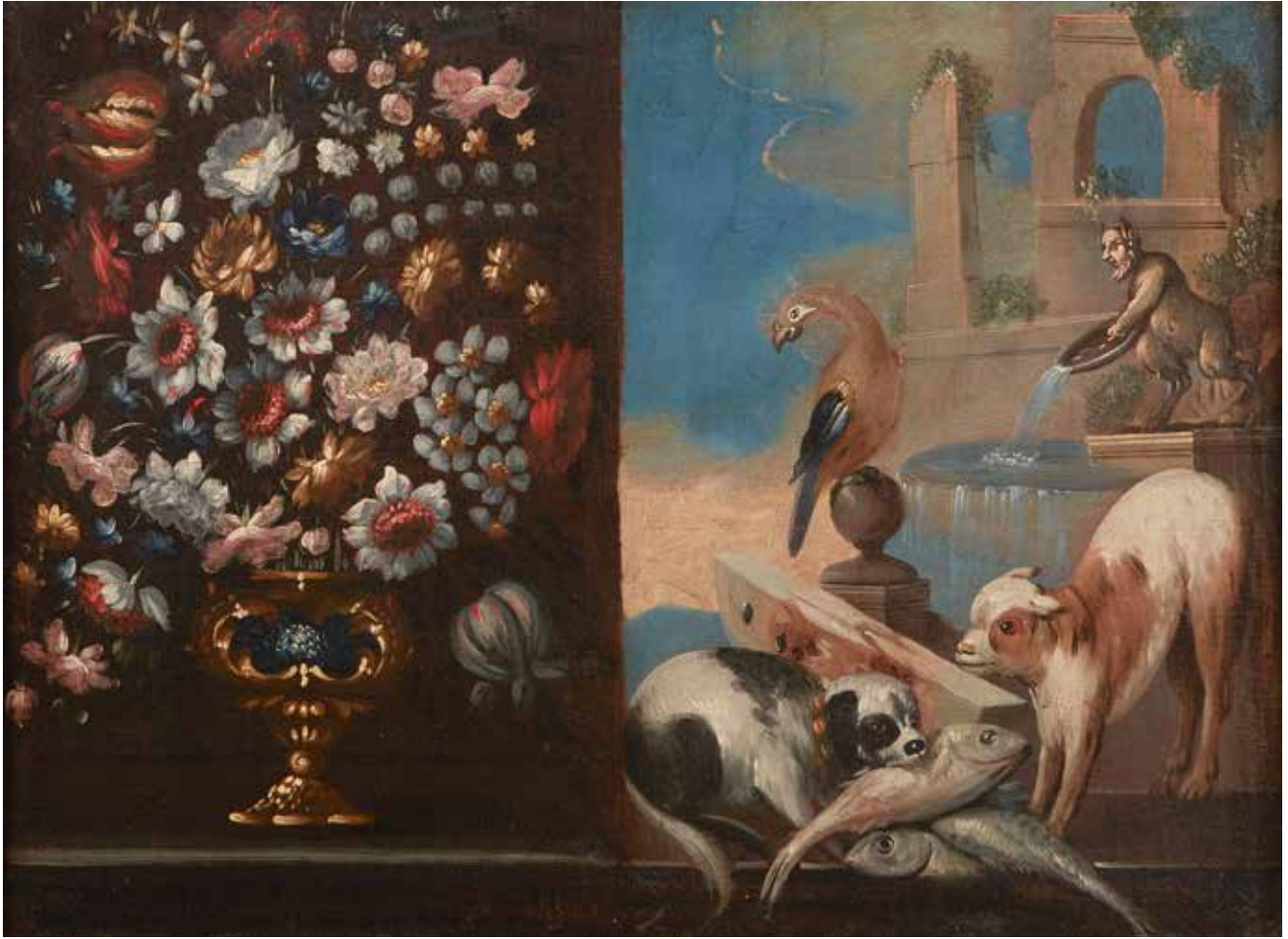
*height 36in (92cm); width 48in (122cm);
depth 23 1/2in (60cm)*

**\$2,000 - 3,000
£1,700 - 2,500**



57 (detail)





58

ITALIAN SCHOOL (18TH CENTURY)

A vase of flowers and dogs with fish by a fountain
oil on canvas

25 1/2 x 33 1/2in (64.8 x 85.2cm)

\$2,000 - 3,000

£1,700 - 2,500





59

ITALIAN SCHOOL (18TH CENTURY)

Roman huntresses with their game and a monkey in an exotic landscape

oil on canvas

27 x 36in (68.6 x 91.5cm)

\$2,500 - 3,500

£2,100 - 2,900









60^w

AFTER SIR PETER PAUL RUBENS

The Lion Hunt

oil on canvas

101 1/2 x 145 1/2 in (257.8 x 369.6cm)

\$20,000 - 30,000

£17,000 - 25,000

The present work is after Sir Peter Paul Ruben's original work, now in the *Alte Pinakothek*, Munich.

Between 1615 and 1621 Rubens painted a group of large scale works of hunting canvases depicting visceral scenes of human and animal conflict, which were inspired by works by Stradanus and earlier Flemish tapestries. These expressive and dramatic works were popular in courtly circles and were often commissioned by noble patrons for their hunting lodges. Ruben's fascination with exotic animals began at an early age when he began to copy engravings of animals and later, in Italy, made drawings from antique sculptures. He purchased numerous books on zoology in circa 1613 for further study on these creatures as he wanted his animals to be as realistic as possible. He supplemented this with information from other sources or first-hand observation and in the case of *The Lion Hunt* it is likely that he studied the lions in Ghent zoo.







61 W

**A SET OF ELEVEN GEORGE III STYLE UPHOLSTERED
WALNUT DINING CHAIRS**

In the manner of Gillows, 20th century

Raised on reeded circular tapering legs.

height 38 1/2in (98cm); width 22 1/2in (58cm); depth 21 1/2in (55cm)

\$4,000 - 6,000

£3,300 - 5,000





62 W

**A VERY LARGE EBONY AND ROSEWOOD INLAID POLLARD
OAK EXTENDING PEDESTAL DINING TABLE**

In the manner of George Bullock, early 19th century

The inlaid top with D form ends raised on a divided pedestal ending in scroll feet, with two reeded central legs and seven leaves.

height 29 1/2in (76cm); width extended 234 1/2in (596cm); depth 66 1/2in (170cm)

\$30,000 - 50,000

£25,000 - 42,000





63

AN USHAK CARPET

dimensions approximately 30ft 10in x 17 ft 10 in (930cm x 532cm)

\$2,500 - 3,500

£2,100 - 2,900

64 W

A GEORGE II STYLE MARBLE TOP GILTWOOD TABLE

20th century

height 35 1/2in (90in); width 73in (185m); depth 36in (91cm)

\$2,000 - 3,000

£1,700 - 2,500

Provenance

Sotheby's, New York, Sale 7029, October 1997, lot 216



64





63





65

65 W

A PAIR OF VENETIAN POLYCHROME DECORATED CARVED WOOD FIGURES

Late 19th/early 20th century

Each raised on a plinth.

height overall 57in (146cm); width 12 1/2in (33cm) (2)

\$2,000 - 3,000

£1,700 - 2,500

66 W

AN ENGLISH GILT METAL MOUNTED POLLARD OAK CABINET

Early 19th century

Enclosing a panel door, with bronze egg and dart mouldings above a plinth base

height 41in (105cm); width 23 1/2in (60cm); depth 24in (62cm)

\$2,500 - 3,500

£2,100 - 2,900



66

67 W

A BIEDERMEIER STYLE BIRCH AND WALNUT SIDE TABLE

20th century

height 31in (80cm); width 47 1/2in (121cm);

depth 24in (61cm)

\$800 - 1,200

£670 - 1,000



67







68

68

**A RUSSIAN PORCELAIN SOLITAIRE TEA SERVICE
STATE DULEVO PORCELAIN FACTORY**

1926-1935

Comprising a teapot, covered sugar bowl, creamer and cup and saucer, marked with overglaze red factory mark for export to countries of the Middle East; 431/66 in black on the teapot, sugar bowl, and creamer, 401 17 on the cup.

height of teapot 4 3/4in (12cm) (4)

\$300 - 500

£250 - 420



69

69

A FRENCH PALISSY WARE VASE

19th century

height 11in (28cm); width 11in (29cm)

\$400 - 600

£330 - 500



70

70

A FRENCH PALISSY WARE OVAL DISH

François Maurice, 19th century

Signed *F. Maurice*.

height 1 1/2in (5cm); length 15 1/8in (38.5cm);

depth 10in (26cm)

\$400 - 600

£330 - 500





71

71
**A SET OF FOUR GLASS
 AND SILVER PLATED HURRICANE LAMPS**
height 13 1/2in (34cm); diameter 10 1/4in (26cm) (4)

\$1,000 - 1,500
 £830 - 1,200



72

72
A JAPANESE IMARI PORCELAIN CHARGER
 Meiji Period
diameter 18 1/2in (47cm)

\$300 - 500
 £250 - 420



73

73
A JAPANESE IMARI PORCELAIN CHARGER
 Meiji Period
diameter 20 3/4in (53cm)

\$800 - 1,200
 £670 - 1,000





74



74
**TWO SETS OF METAL AND HARDSTONE
 FRUIT FORKS AND KNIVES**

20th century
 Twenty three pieces.

\$500 - 800
£420 - 670

75
AN ENGLISH SILVER FOOTED TRAY

London, 1803
 Diameter 16in (40cm), 52 oz troy.

\$1,000 - 1,500
£830 - 1,200



75 (detail)



76



76

A FRENCH SILVER AND SILVER GILT FLATWARE SERVICE

Odiot, second quarter 19th century

In fitted oak trays, comprising 60 dinner knives, 72 dinner forks, 24 asparagus tongs, 24 cocktail forks, 24 place spoons, 24 fish forks, 24 fish knives, 24 seafood forks, 24 ice cream spoons, 24 tablespoons, 24 fruit forks, 24 fruit knives, 24 dessert knives, 24 coffee spoons, 12 open salts, 11 salt spoons and 39 serving pieces, *total approximately 711oz troy, weighable* . (482)

\$5,000 - 7,000

£4,200 - 5,800

Provenance

Janet Mavec, New York, 1984



77



77

A PAIR OF BUCCELLATI STERLING SILVER FIGURAL SALTS OF NEPTUNE

20th Century

together with a Group of Sterling Silver Objects, comprising a set of six silver place holders with Royal Artillery cap badges, an owl match holder and a ruby glass and silver double sided scent bottle.

height of salts 4 1/8in (10.8cm); length of perfume bottle 5 1/2in (14cm), total approximately 42oz troy, weighable.

\$1,000 - 1,500

£830 - 1,200

78



78

AN ENGLISH SILVER CHRISTENING CUP

London, 1900, Francis Higgins III

height 4 7/8in (12cm), approximately 9oz troy.

\$500 - 800

£420 - 670

79



79

A SILVER PLATED SAMOVAR

Late 19th/early 20th century

height 19in (48cm).

\$500 - 800

£420 - 670

80

A GERMAN SEMIPRECIOUS STONE MOUNTED SILVER FIGURE OF PUSS IN BOOTS

Marked for Hanau, late 19th century

height 19in (48.5cm); width 10in (26cm); approximately 79 troy ounces, all in

\$1,500 - 2,500

£1,200 - 2,100





80



81 W

**AN ENGLISH EBONY AND BURR YEW BANDED POLLARD OAK
DINING TABLE**

In the manner of George Bullock, early 19th century

The inlaid circular top raised on a flared pedestal continuing to four
paw feet.

height 28in (72cm); diameter 81in (207cm)

\$15,000 - 25,000

£12,000 - 21,000







82



82

82

**GIOVANNI BATTISTA PIRANESI
(1720-1778)**

*Veduta del Prospetto Principale Della Colonna Trajana;
Veduta del Prospetto Principale Della Colonna
Antonina*

Engravings, on paper, later restrikes, with margins,
framed. (2)

Each image 118 x 30 1/4in (300 x 77cm)

\$2,000 - 3,000

£1,700 - 2,500

83

**GIOVANNI BATTISTA PIRANESI
(1720-1778)**

Two Engravings of Roman Monuments

Engravings, on paper, later restrikes, with margins,
each framed. (2)

*Framed 42 1/4 x 31 3/4in (107 x 80.5cm); framed 42
3/4 x 33 1/2in (109 x 87cm)*

\$1,000 - 1,500

£830 - 1,200

84

**GIOVANNI BATTISTA PIRANESI
(1720-1778)**

*A Group of Three Engravings of Roman Monuments
and Ruins*

Engravings, on paper, later restrikes, with margins,
each framed. (3)

*Each framed 34 x 42 1/2in (86 x 108cm) (2); 37 x 46in
(94 x 117cm) (1)*

\$1,000 - 1,500

£830 - 1,200

85

**GIOVANNI BATTISTA PIRANESI
(1720-1778)**

A Group of Two Engravings of Roman Arms and Armor

Engravings, on paper, later restrikes, with margins,
each framed. (2)

Each framed 36 1/2 x 46in (92 x 116.7cm)

(Not pictured, view online for image)

\$1,000 - 1,500

£830 - 1,200

86

**GIOVANNI BATTISTA PIRANESI
(1720-1778)**

Two Engravings of Roman Arms and Armor

Engraving, on paper, a later restrike, with margins,
framed. (2)

Each framed 37 x 46in (94 x 116.8cm)

\$1,000 - 1,500

£830 - 1,200





83



83



84



84



84



86



86



87 W

**A MONUMENTAL PAIR OF ITALIAN BAROQUE CARVED
GILTWOOD MIRRORS**

18th century

Each cartouche form mirror plate surmounted by a classical mask
and surrounded by an elaborately carved frame of shells, scrolls and
acanthus leaves.

height 100in (254cm); width 79in (200cm)

\$40,000 - 60,000

£33,000 - 50,000







88 W

**A SET OF EIGHTEEN GEORGE I STYLE UPHOLSTERED
WALNUT DINING CHAIRS**

20th century

Each raised on scroll carved cabriole legs ending in pad feet.
height 38 1/2in (97cm); width 22 1/2in (57cm); depth 22in (55cm)

\$3,500 - 4,500

£2,900 - 3,700





89

89 W

A FRENCH PROVINCIAL CHERRY BUFFET

18th century
height 38in (97cm); width 50in (127cm);
depth 22 1/2in (58cm)

\$600 - 800

£500 - 670



90

90 W

**A LOUIS XV/XVI TRANSITIONAL STYLE
GILT METAL MOUNTED AND PARQUETRY
INLAID KINGWOOD COMMODE**

Late 19th/early 20th century
height 33 1/5in (86cm); width 53 1/2in (136cm);
depth 24in (62cm)

\$1,500 - 2,500

£1,200 - 2,100



91

91 W

**A FLORENTINE STYLE PAINTED SLATE
TABLE TOP**

20th/21st century
Diameter 42in (106cm)

\$700 - 800

£580 - 670





92



94



93 (one of a pair)



95

92 W

A PARQUETRY TOP TEAK COFFEE TABLE

20th century

height 18 1/2in (47cm); width 82 1/2in (210cm); depth 40 1/2in (104cm)

\$600 - 800

£500 - 670

94 W

A PARQUETRY TOP STAINED WOOD COFFEE TABLE

20th century

height 19 1/2in (50cm); width 75 1/2in (193cm); depth 52in (133cm)

\$600 - 800

£500 - 670

93 W

A PAIR OF CREAM UPHOLSTERED SOFAS

In the manner of Howard & Sons

height 33in (84cm); width 76in (194cm); depth 41 1/2in (106cm)

\$2,000 - 3,000

£1,700 - 2,500

95 W

A SET OF FOUR LOUIS XVI STYLE CARVED BEECH FAUTEUILS

Late 19th century

height 41 1/2in (106cm); width 25 1/2in (66cm); depth 21in (54cm) (4)

\$1,200 - 1,800

£1,000 - 1,500





96 W

A VERY LARGE PAIR OF CHINESE CLOISSONNÉ HORSES

20th century

On stained wood bases.

height 80in (204cm); width 66 1/2in (170cm); depth 26in (67cm) (2)

\$15,000 - 20,000

£12,000 - 17,000

Provenance

Chinese Arts & Crafts LTD, Hong Kong, February 24, 1998







97

A ZIEGLER STYLE CARPET

20th century

dimensions approximately 13ft 2in x 11ft 8in (398cm x 360cm)

\$800 - 1,200

£670 - 1,000





98



100



99



101

98
A CHINESE BLUE AND WHITE PORCELAIN VASE
20th century
Qianlong mark.
height 21in (53cm)

\$700 - 1,000
£580 - 830

99 W
A PAIR OF CHINESE BLUE AND WHITE PORCELAIN GARDEN SEATS
20th century
together with a pair of Chinese blue and white porcelain covered vases.
height of vases 21in (53cm); height of seats 19 1/4in (49cm) (4).

\$700 - 1,000
£580 - 830

100
A CARVED LIMESTONE FIGURE OF THE VIRGIN AND CHILD
Probably French, late 18th century
height 21 1/2in (55cm); width 7 1/2in (20cm)

\$700 - 1,000
£580 - 830

101
AN ITALIAN CARVED, PAINTED AND PARCEL GILTWOOD AND GESSO FIGURE OF AN ANGEL
19th century
height 27 1/2in (70cm); width 14 1/2in (37cm); depth 8 1/2in (22cm)

\$800 - 1,200
£670 - 1,000





102



103



104 (part lot)



105



106



107



102

A GILT METAL AND GLASS PEACOCK FORM LAMP

Probably Czech, 20th century
height 9in (24cm); width 14in (36cm); depth 16 1/2in (42cm)

\$1,500 - 2,000

£1,200 - 1,700

103

A RENÉ LALIQUE MOLDED GLASS JARDINIÈRE: OEILLETTS

Model 3464
signed R.LALIQUE
length 15in (38.5cm)

\$1,000 - 1,500

£830 - 1,200

104

A GROUP OF GRAND TOUR STYLE PLASTER DECORATIONS

Late 19th/early 20th century
Comprising a pair of columns, four busts and three plaques.
height of columns 48 1/2in (123cm); width 11 1/4in (28cm) (9)

\$1,500 - 2,500

£1,200 - 2,100

105

AN AUSTRIAN COLD PAINTED BRONZE AND BLACK MARBLE EGYPTIAN WOMAN AND LEOPARD VIDE POCHÉ

Franz Bergman, early 20th century
Signed Nam Greb.
height 8 1/4in (21cm); diameter 9 3/4in (25cm)

\$800 - 1,200

£670 - 1,000

106

A GROUP OF THREE CARTIER TOOLED RED LEATHER BOXES

Each with a fitted interior.
height of largest 10in (25cm); width 19in (48cm); depth 13 1/4in (33in)
(3)

\$400 - 600

£330 - 500

107

A PAIR OF LOUIS XVI STYLE GILT METAL CHENETS

20th century
height 17 1/2in (44cm); width 16 1/2in (41cm); depth 27in (68cm)

\$700 - 1,000

£580 - 830

108

AN AUBUSSON CARPET

20th century
dimensions approximately 21ft 4in x 11ft 5in (650cm x 347cm)

\$2,000 - 3,000

£1,700 - 2,500



108





109

JACQUES BERTAUX (FRENCH, 1745-1818)

The *Duc d'Orleans* and his suite hunting in the *Île de France*
signed and indistinctly dated 'J Bertaux ...' (lower right)
oil on canvas

51 1/2 x 77 1/2in (130.8 x 196.9cm)

\$25,000 - 35,000

£21,000 - 29,000

Provenance

Probably, Louis-Philippe I, duc d'Orléans (1725-1785), presumably at the Château de Saint-Cloud, and by descent to probably Louis-Philippe III, duc d'Orléans, subsequently King of the French (1773-1850) and by descent.

The present picture is considered to be one of a set of four showing the duke hunting in neighbourhood of the Château de Saint-Cloud, his country seat in the Île-de-France. The first painting of the series, which includes portraits of the duke and other family members and is dated 1773, and was offered at Christie's, London on 20 May 2010, lot 81. Another from the series, in which the château is visible, was offered at Christie's, New York on 4 April 1990, lot 230.







110

110

ARTIST UNKNOWN

Untitled

signed 'REY' (lower right)

oil on canvas

74 x 53 1/8 in.

188 x 135.3 cm.

\$1,000 - 1,500

£830 - 1,200



111

111

JEAN LE GAC (B. 1936)

Le delassement du peintre francais, 1983

signed and dated 'Jean Le Gac 83' (lower left)

graphite and pastel on paper

32 1/4 x 20 5/8 in.

81.9 x 52.4 cm.

\$2,000 - 3,000

£1,700 - 2,500

Provenance

Daniel Templon Gallery, Paris

Acquired directly from the above by the present owner





112

JACQUELINE MARVAL (FRENCH, 1866-1932)

Jouer avec la poupée

signed 'Marval' (lower right)

oil on canvas

35 x 46in (88.8 x 116.8cm)

\$8,000 - 12,000

£6,600 - 10,000

Provenance

Galerie E. Druet, Paris;

James Mayor Gallery, London;

Acquired from the above by the present owner.





113

J. P. ESPIENNES (BELGIAN, 1840-1895)

A grey draft horse
signed and dated 'Jo. Espiennes 1870.' (lower right)
oil on canvas
59 x 85 1/2in (149.9 x 217.2cm)

\$20,000 - 30,000

£17,000 - 25,000

Provenance

Acquired *circa* 1980, London, England.





114

J. P. ESPIENNES (BELGIAN, 1840-1895)

A brown draft horse
indistinctly signed 'J' (lower right)
oil on canvas
59 1/2 x 81 1/2in (151.1 x 207cm)

\$20,000 - 30,000

£17,000 - 25,000

Provenance

Acquired *circa* 1980, London, England.





115

115
A CHINESE PAINTING OF THREE HORSES

20th century
 Ink and color on silk.
height 47 5/8in (120cm); width 67 3/8in (17cm)

\$1,500 - 2,500
£1,200 - 2,100

116
A TABRIZ SILK RUG

20th century
dimensions approximately 5ft 8 1/2in x 4ft 6 1/2in (172 x 129cm)

\$2,500 - 3,500
£2,100 - 2,900

117
A TABRIZ SILK PRAYER RUG

20th century
dimensions approximately 5ft 10in x 4ft 6in (170cm x 133cm)

\$1,200 - 1,800
£1,000 - 1,500

118
A ANATOLIAN PRAYER RUG

20th century
dimensions approximately 5ft 1in x 3ft 9in (155cm x 114cm)

\$700 - 1,000
£580 - 830

119
A TABRIZ SILK PRAYER

20th century
dimensions approximately 5ft 4in x ft 10in (162cm x 117cm)

\$700 - 1,000
£580 - 830

120
A KURK TABRIZ RUG

20th century
dimensions approximately 7ft 1in x 5ft 5in (155cm x 117cm)

\$2,000 - 3,000
£1,700 - 2,500

121
A TABRIZ SILK PRAYER RUG

20th century
dimensions approximately 5ft 7in x 4ft (173cm x 121cm)

\$1,500 - 2,000
£1,200 - 1,700





116



117



118



119





122



123

122

**JEAN-BAPTISTE LEPRINCE
(FRENCH, 1734-1781)**

Two scenes from Russian inns (a pair)
the first signed and dated 'Le Prince, 1767' (lower left);
the second signed 'Le Prince' (lower right)
both pen and ink and wash on paper, *en grisaille*
each 5 5/8 x 4 1/2in (14.4 x 11.5cm) (2)

\$5,000 - 8,000
£4,200 - 6,600

Provenance

Nissim de Camondo
Sale, Sotheby's, New York, 23 January 2001, lot 380

Jean-Baptiste Leprince, a pupil of Francois Boucher, travelled to Russia in 1758 to work for Catherine the Great in Saint Petersburg. He remained in Russia for 5 years and created a great number of drawings which he later used as a basis for paintings. In 1765 he exhibited 15 paintings at the Salon in Paris, all of which were Russian subjects.

123

**CIRCLE OF JEAN-HONORÉ FRAGONARD
(FRENCH, 1732-1806)**

A lady in her bed chamber
oil on panel
9 x 7in (22.9 x 17.8cm)

\$3,000 - 5,000
£2,500 - 4,200







124

124
**FIVE CONTINENTAL MODELS OF FULL ARMOURS
 IN THE GERMAN LATE 16TH CENTURY STYLE**

Late 19th century
 Each fully articulated and mounted on plinth bases.
heights 35in (89cm) to 38in (97cm); width 15 1/2in (40cm) (5)

\$2,500 - 3,500
£2,100 - 2,900

125
**A SET OF CHINESE BAMBOO WOVEN OPERA FIGURES
 AND BACKGROUNDS**

Fukien Province, Qing Dynasty

\$200 - 300
£170 - 250

126
A FRENCH SINGING BIRD AUTOMATON

Early 20th century
 On an octagonal giltwood and gesso base.
height 20in (52cm); width 11in (29cm)

\$700 - 900
£580 - 750

127
**A MOLDED CLEAR AND BLACK GLASS DECANTER
 IN THE FORM OF NAPOLEON BONAPARTE**

For Luis Ocaña Napoleon Armagnac
height 11in (28cm); width 6in (15.5cm)

\$300 - 500
£250 - 420

128
A WIENER WERKSTATTE GLAZED EARTHENWARE VASE

Designed by Kitty Rix, 1920s
 Impressed with WW stamp, *MADE IN AUSTRIA*, 652 and KR
height 5in (13cm); width 5.5in (14.5cm)

\$500 - 1,000
£420 - 830

129
AN METAL EMBROIDERED CRIMSON VELVET TUNIC FRONT

Mounted in a mahogany case.
height of tunic 17in (43cm); height of case 26 1/2in (68cm); width 16 1/2in (43cm)

\$300 - 500
£250 - 420

130
A CONTINENTAL SILVER COVERED CENTERPIECE

Late 19th century
 Together with a Group of Five Silver Plated Table Articles.
 Height of centerpiece
10 1/2in (25cm); approximately 21oz troy, weighable. (6)

\$300 - 500
£250 - 420





125



126



127



128



129





131

FLEMISH SCHOOL (18TH CENTURY)

A capriccio of the Topkapi Palace with a slave market in the foreground
oil on paper laid down on panel

11 x 18 1/2in (28 x 47cm)

\$6,000 - 8,000

£5,000 - 6,600





132

MANNER OF GEORGE CATLIN

A native American on horseback under a brown bear attack
indistinctly signed and dated 'A. Valato. 1861' (lower left)

oil on canvas

35 x 45 3/4in (88.9 x 116.2cm)

\$5,000 - 8,000

£4,200 - 6,600





133

133
A GROUP OF FIVE CHINESE GLAZED POTTERY AND ROCK CRYSTAL FIGURES

Han dynasty and later
height of tallest 11in (28.5cm) (5)

\$500 - 1,000
 £420 - 830

134
A SABINO MOLDED OPALESCENT GLASS FIGURE OF A COCKEREL

Signed Sabino, France.
height 7 3/4in (19.5cm); width 6in (16cm)

\$200 - 300
 £170 - 250

135
A SABINO MOLDED IRIDESCENT GLASS MODEL OF A CARP

Signed Sabino France.
height 7in (18cm); length 11 3/4in (30cm)

\$250 - 350
 £210 - 290

136
A CONTINENTAL FAIENCE FRUIT-FILLED BOWL

20th century
height 18 1/2in (47cm); width 17in (44cm)

\$400 - 600
 £330 - 500

137
A SILVER REPOUSSE WATER PIPE

20th century
height 22in (56cm); approximately 33oz troy.

\$500 - 700
 £420 - 580

138
A CHINESE SOAPSTONE CARVING OF HORSES

20th century
 On a hardwood stand.
height 8 1/2in (22cm); width 12in (30.5cm)

\$500 - 800
 £420 - 670

139
AN ITALIAN GILT BRONZE AND SIENNA MARBLE DOLPHIN AND SHELL FORM INKWELL

19th century
height 5 1/2in (14cm); width 3 1/2in (9cm); depth 5in (13cm)

\$800 - 1,200
 £670 - 1,000





134



135



136



137



139





140

140
**AFTER JEAN-BAPTISTE PROSPER JOLLOIS (1776-1842),
 AND AFTER ÉDOUARD DE VILLIERS DU TERRAGE (1780-1855)**

A Set of Eight Engravings Depicting Egypt,
 Engravings, on paper, with margins, each framed. (8)
 Frame 32 1/2 x 24in (82.6 x 61cm) or reverse

\$2,000 - 3,000
£1,700 - 2,500



141

141
AFTER JOHN FREDERICK HERRING (1795-1865)

Two Hunting Scenes,
 Lithographs, with hand coloring, on paper, with margins, each framed.
 (2)
 Framed 24 1/2 x 44 3/4in (62.2 x 113.7cm)

\$400 - 600
£330 - 500



142

142
ARTIST UNKNOWN

Cuban Cigar, 1999
 Etching, on wove paper, signed indistinctly in pencil and numbered
 180/400, with blindstamp 'Cuba', with wide margins, framed.
 Frame 28 1/2 x 19in (72.4 x 48.2cm)

\$200 - 300
£170 - 250



144 (one from a set of ten)

143
ARTIST UNKNOWN

Untitled
 ink, watercolor and collage on paper (in 4 parts)
 20 1/2 x 15 1/2 in.
 52.1 x 39.4 cm.
 4

\$500 - 1,000
£420 - 830

144
ARTIST UNKNOWN

A Set of Ten French Cityscapes,
 Lithographs, on paper, with margins, each framed. (10)
 Frame approx. 20 3/4 x 24in (52.7 x 61cm)

\$400 - 600
£330 - 500



145

REINIS ZUSTERS (1919-1999)

City Overpass

signed 'ZUSTERS' (lower right); inscribed
'CRESCENT HEAD LANDSCAPE' (on the reverse)

oil on masonite

24 x 30 in.

61 x 76.2 cm.

\$600 - 800

£500 - 670

Provenance

Artarmon Galleries, Artarmon



145

146

REINIS ZUSTERS (1919-1999)

Outback Shack

signed 'ZUSTERS' (lower left)

oil on masonite

30 x 24 in.

76.2 x 61 cm.

\$600 - 800

£500 - 670

Provenance

Artarmon Galleries, Artarmon



146

147

GINGER RILEY MUNDUWALAWALA (1937-2002)

Garimala in Limmen Bight Country, 2000

signed 'GINGER RILEY' (lower center); inscribed,
numbered and dated '4/11 JAN 2000 PROPERTY
OF BEVERLY KNIGHT FOR GINGER RILEY' (on the reverse)

acrylic on canvas

26 x 26 3/8 in.

66 x 67 cm.

\$3,000 - 5,000

£2,500 - 4,200

Provenance

Alcaston Gallery, Fitzroy

Acquired directly from the above by the present
owner in 2000



147





148

148

SYLVIA MARTINS (B. 1956)

Owl, 1986

signed and dated 'Sylvia Martins May/June 86' (on the reverse)

oil on canvas

78 x 50 in.

198 x 127 cm.

\$800 - 1,200

£670 - 1,000



149

149

MCDERMOTT & MCGOUGH (B. 1952 AND 1958)

Our Latest in Colored Goods, 2000

signed 'MACDERMOTT & MACGOUGH' (lower right); inscribed '1915' (lower left)

graphite and watercolor on paper

30 x 22 1/4 in.

76.2 x 56.5 cm.

\$1,000 - 2,000

£830 - 1,700

Provenance

Galerie Jérôme de Noirmont, Paris

Acquired directly from the above by the present owner

Exhibited

Paris, Galerie Jérôme de Noirmont, *McDermott & McGough: The Deep Future...The Deep Past*, 8 June - 14 September 2000



150

JACQUES PRÉVERT (1900-1977)

Untitled, 1964

signed with artist's initials 'JP' (lower left); signed, inscribed in French and dated 'Paris February 1964 Jacques Prévert' (along lower edge)

photograph collage on paper board

12 1/2 x 9 3/8 in.

31.8 x 23.8 cm.

\$7,000 - 9,000

£5,800 - 7,500

Provenance

The Mayor Gallery, London

Acquired directly from the above by the present owner



150

151

GEORGES HUGNET (1906-1974)

Untitled, 1973

signed and dated 'GEORGES HUGNET 1937' (lower right)

ink, photographs and paper collage on paper board

16 1/4 x 10 5/8 in.

41.3 x 27 cm.

\$3,000 - 5,000

£2,500 - 4,200

Provenance

The Mayor Gallery, London

Exhibited

Las Palmas, Centro Atlantico de Arte Moderno, *Ink Dreams: Oscar*

Domínguez and the Decalcomanía del Deseo, 16 November - 30

December 1993



151





152

152

A KHORASAN CARPET FRAGMENT

Possibly 17th century

*dimensions approximately 30 1/2in x 33 1/4in
(76cm x 85cm)*

\$3,000 - 5,000

£2,500 - 4,200





153



153

153 W

AN ITALIAN SCAGLIOLA TABLE TOP

20th century

On a steel base.

height 15in (38cm); width 78 1/2in (220cm);

depth 39in (100cm)

\$3,000 - 5,000

£2,500 - 4,200



154

A BRUSSELS HISTORICAL TAPESTRY

16th/17th century

After Karel van Mander II, from Anthony and Cleopatra series,
the border centering an armorial surrounded by flowers and fruits
and flanked by Solomonian columns.
dimensions approximately 11ft 9in x 13ft 3in (358cm x 401cm)

\$8,000 - 12,000

£6,600 - 10,000







155

155 W
A LOUIS XV GILTWOOD MIRROR
18th century
height 52in (132cm); width 28in (71cm)

\$1,200 - 1,800
£1,000 - 1,500



156

156 W
A LOUIS XV STYLE GILT METAL MOUNTED MAHOGANY ENVELOPE CARD TABLE
Late 19th/early 20th century
height 30in (76cm); width 23 1/2in (59cm); depth 24in (76cm)

\$800 - 1,200
£670 - 1,000



157

157 W
A VICTORIAN LEATHER INSET MAHOGANY WRITING TABLE
Late 19th century
height 28 1/2in (73cm); width 66in (168cm); depth 35 1/2in (91cm)

\$1,500 - 2,000
£1,200 - 1,700



158 W

**AN ITALIAN PAINTED AND GILT GESSO
DECORATED CARVED WOOD CRADLE**

Late 19th century

height 28in (72cm); width 24in (62cm); depth
41in (105cm)

\$2,000 - 3,000

£1,700 - 2,500



158

159 W

**A SET OF THREE LOUIS XVI STYLE
PAINTED FAUTEUILS**

20th century

height 40in (102cm); width 28in (72cm);
depth 24in (61cm) (4)

\$1,500 - 2,000

£1,200 - 1,700



159





160



162



161



163

160 W
A PAIR OF ENGLISH MAHOGANY PEDESTAL CUPBOARDS
 Second quarter 19th century
 With later slate tops.
height 30in (77cm); width 20in (52cm); depth 20in (52cm) (2)

\$1,000 - 1,500
£830 - 1,200

162 W
A GEORGE III MAHOGANY TILT TOP TABLE
 18th century
height 27 1/2in (70cm); diameter 30 1/2in (77cm)

\$700 - 1,000
£580 - 830

161 W
A WILLIAM IV MARBLE INSET MAHOGANY CENTER TABLE
 Second quarter 19th century
height 29 1/2in (75cm); diameter 29in (74cm)

\$800 - 1,200
£670 - 1,000

163 W
AN ART DECO STYLE WALNUT, THUYAWOOD AND EBONIZED CENTER TABLE
 20th century
height 30 1/2in (78cm); diameter 46in (117cm)

\$800 - 1,200
£670 - 1,000





164



166



165



167

164 W

A LOUIS XVI STYLE PAINTED MIRROR

Late 19th/early 20th century

height 74in (187cm); width 51in (129cm)

\$800 - 1,200

£670 - 1,000

165 W

A SWISS PAINTED PINE CUPBOARD

Incorporating antique elements

height 72 1/2in (184cm); width 54 1/2in (138cm); depth 20 1/2in (52cm)

\$1,500 - 2,000

£1,200 - 1,700

166 W

**A LOUIS XVI MARBLE TOP GILT METAL MOUNTED
PARQUETRY INLAID KINGWOOD AND WALNUT COMMODE**

18th century

height 34in (86cm); width 50in (127cm); depth 21 1/2in (55cm)

\$1,200 - 1,800

£1,000 - 1,500

167 W

A SWISS PAINTED PINE CUPBOARD

Including antique elements

height 73 1/5in (187cm); width 80 1/2in (205cm); depth 31in (79cm)

\$800 - 1,200

£670 - 1,000





168

AN INDIAN CARPET

20th century

dimensions approximately 17ft 4in x 12ft 1in (530cm x 370)cm

\$2,000 - 3,000

£1,700 - 2,500





169 W

A JAPANESE TWO PANEL SCREEN

Meiji period

ink, color and gold foil on paper, 戊子夏日写

tsuchinoe-ne Natsubi sha (painted in a day in summer in the year of tsuchinoe-ne).

height 60in (150cm); width overall 62in (159cm)

\$800 - 1,200

£670 - 1,000



170 W

**A CEYLONESE GILT METAL MOUNTED
HARDWOOD CABINET ON STAND**

19th century

height 68in (172cm); width 55 1/2in (140cm); depth
24 1/2in (62cm)

\$1,500 - 2,500

£1,200 - 2,100









171



173



172



174

171
A PAIR OF CHINESE PAINTED POTTERY FIGURES

Han dynasty
height of taller 23in (59cm) (2).

\$1,500 - 2,000
£1,200 - 1,700

172
A GROUP OF FOUR CHINESE PAINTED POTTERY FIGURES

North Wei Dynasty and later
height of tallest 13 1/2in (34cm) (4).

\$1,200 - 1,800
£1,000 - 1,500

173
A CHINESE TANG STYLE TERRACOTTA CAMEL

height 17 3/4in (45cm); width 4 3/4in (12cm); depth 12in (31cm)

\$1,200 - 1,800
£1,000 - 1,500

174^W
A CHINESE PAINTED POTTERY FIGURE OF A CAMEL AND RIDER

Han dynasty
height 34in (86cm); width 10 1/2in (27cm); depth 25in (63 1/2cm)

\$3,000 - 5,000
£2,500 - 4,200





175 W

**A COLLECTION OF THIRTY TWO CHINESE PAINTED POTTERY
FIGURES OF WARRIORS**

Han Dynasty

With polychrome decoration.

height 18 1/2in (47cm) (32).

\$2,500 - 3,500

£2,100 - 2,900





176

176
A SET OF TWELVE CERAMIC FIGURES OF NAPOLEONIC ERA SOLDIERS

Bernard Belluc, 20th century
 Signed *BELLUC*.
 heights 12in (30.5cm) to 12 1/2in (32cm) (12)

\$1,000 - 1,500
 £830 - 1,200

177
A HERMES BRASS DIAL BAROMETER

20th century
 Together with a Bargio brass barometer.
 diameter of larger 8in (21cm) (2)

\$400 - 600
 £330 - 500

178
AN ENGLISH SILVER MOUNTED DESK CLOCK

Birmingham, 1911
 Together with a tennis themed glass and brass ball clock.
 height of larger 2in (5cm); width 4in (10cm)
 (2)

\$400 - 600
 £330 - 500

179
A TIFFANY & CO. BRASS DESK CLOCK

20th century
 Together with A Jaguar stainless steel desk clock.
 width of larger 5in (13cm) (2)

\$300 - 500
 £250 - 420

180
A MATTHEW NORMAN GILT BRASS AND GLASS DESK CLOCK

20th century
 Together with A Chaument brass gyroscopic timepiece with case.
 height of larger 7 1/2in (19.5cm) (2)

\$1,000 - 2,000
 £830 - 1,700

181
A BRASS COMPASS AND LEATHER CASE

Late 19th century
 The case marked French & Son Ltd., London, 1917, together with a brass sextant and a brass stand.
 height of stand 7in (17cm) (4)

\$500 - 1,000
 £420 - 830

182
A CAST BRONZE MODEL OF A STEAM LOCOMOTIVE

Bearing plaque reading *PASSE TEMPS 1908*
 height 4 3/4in (12cm); length 11 1/2in (29.5cm); width 3in (7.5cm)

\$400 - 600
 £330 - 500





177



180



178



181



179



182





183

183
A PATINATED BRONZE BUST OF A FAUN: DER VERLIEBTE FAUN

After a model by Hans Schwegerle (1882-1950)
With *HS* monogram.
height 8 1/4in (21cm)

\$400 - 600
£330 - 500

184
A JAPANESE PORCELAIN EROTIC FIGURAL GROUP

20th century
height 7 1/2in (19cm); width 10 1/4in (26cm)

\$500 - 800
£420 - 670



184



185

185
A PATINATED BRONZE SCULPTURE: THE EMBRACE

Cast after a model by Bruno Zach (1891-1935)
Signed *B. ZACH*
height 6 1/2in (16.5cm); width 4 1/2in (12cm); depth 3in (8cm)

\$1,500 - 2,000
£1,200 - 1,700





186

A COLLECTION OF CIGAR AND OTHER GENTLEMEN'S ACCESSORIES

Including two cigar boxes decorated by Alain Le Yaouanc, eight cigar cutters, five portable cases, a lighter and a cased cigar holder.
dimensions of boxes 2in x 10in x 8 1/4in (5cm x 26cm x 21cm) (17)

\$1,500 - 2,500
£1,200 - 2,100





187

187
A RARE DUNHILL SILVER PLATE CHARLESTON TABLE LIGHTER

Circa 1996
8cm wide, 3cm deep, 13.5cm high (3in wide, 1in deep, 5in high)

\$2,000 - 3,000
£1,700 - 2,500

188
A DUNHILL SILVER OIL LAMP FORM LIGHTER

20th century
Patent number 592139.
length 7in (18cm).

\$150 - 250
£130 - 210



189

189
A DUNHILL LEATHER MOUNTED COMBINATION RULER LIGHTER

Together with a Dunhill miniature leather mounted travelling alarm clock.
length of lighter 12 1/4in (31cm) (2)

\$600 - 800
£500 - 670



190

190
A DUNHILL AQUARIUM LIGHTER

With an electroplated mount, engraved and painted acrylic body, one side depicting a silver and black fish, the other lacking acrylic with a similar design, amongst water plants and rocks on a blue and green background.
height 2 3/4in (7cm); width 2 1/4in (6cm)

\$800 - 1,200
£670 - 1,000





WILSON
&
CHURCHILL
GILBERT

WILSON
&
CHURCHILL
GILBERT

WILSON
&
CHURCHILL
GILBERT



NEW
DESP

THE
PROPERTY
OF

11 12 1
2
3
4
5
6
7
8
9
10

dunhill





191

191
A GROUP OF LIGHTERS, VESTA CASES AND CIGARETTE CASES

Including silver and gold plated examples, Chopard, Cartier and Zippo, etc., approximately fifty-three pieces. (53)

\$1,500 - 2,000
£1,200 - 1,700



192

192
A GROUP OF FIFTEEN TABLE LIGHTERS

Including three Lalique glass lion table lighters, a Hermes table lighter, a Dunhill lighter, a Vintage Dunhill 1949 chrome tankard table lighter and diving bell novelty table lighter.
height of Lalique lighters 4in (11cm) (15)

\$2,000 - 3,000
£1,700 - 2,500



193

193
A COLLECTION OF BIJOUTERIE

Including a Russian silver cigarette case with niello decoration, a Victoria silver card case, Birmingham, 1884, a shagreen mounted etui, a shagreen case, a silver matchbox case engraved *JEFFREY STEINER*, a travel clock retailed by Tiffany & Co., a Nepro travel clock, and a Chinese brass cigarette case.
Russian case 4 1/4in x 3 1/2in (11cm x 9cm) (8) (8)

\$2,000 - 3,000
£1,700 - 2,500



194

**A CARTIER LAPIS LAZULI AND SILVER PLATED PRISM
MYSTERY DESK CLOCK**

Circa 1960

With a hidden dial behind the glass face.
height 4 1/8in (10cm); width 3 1/2in (8cm)

\$4,000 - 6,000

£3,300 - 5,000



194

195

**EBEL. AN 18K ROSE GOLD QUARTZ BRACELET WATCH WITH
DATE**

Model: 1911

Date: 2000's

Movement: quartz

Dial: Circular black, numerals formed by small screw heads, gold hands

Case: Brushed tonneau with circular convex bezel

Strap/Bracelet: Tapered, brushed and polished curved oblong links

Buckle/Clasp: Deployant

Size: 35mm

\$2,000 - 3,000

£1,700 - 2,500



195





200



200



197



198



199



202

196

A STEEL REVERSIBLE 'ELITE' WRISTWATCH, ROTARY

quartz movement; case and dial signed; Stamped Ref 10830 PO 01966; length: 42mm.

\$200 - 250

£170 - 210

197

A NAMIKI GREEN LACQUER MAKI-E FOUNTAIN PEN FROM THE GEISHA SERIES

Medium 18k number 5 nib A1002, signed 'Namiki Yukari 04/75' in Japanese script.

\$700 - 1,000

£580 - 830

198

AN OMAS LIMITED EDITION MIDNIGHT BLUE RESIN, DIAMOND AND GOLD LAS VEGAS FOUNTAIN PEN

Medium 18k nib, 037/100, no packaging or papers.

\$700 - 1,000

£580 - 830

199

AN OMAS LIMITED EDITION BLUE RESIN, LAPIS LAZULI AND STERLING SILVER ROMA 2000 MILLENNIO FOUNTAIN PEN III

Medium 18k nib, 0021/1000, no packaging or papers.

\$300 - 500

£250 - 420

200

AN OMAS LIMITED EDITION BLUE RESIN AND GOLD PLATED MARCONI 100 ANNI DI RADIO '95 QSL FOUNTAIN PEN AND A VISCONTI REBECCA MOSS LIMITED EDITION STERLING SILVER AND YELLOW CELLULOID NEW YORK FOUNTAIN PEN

The first with a broad 18k nib, 2465, with wooden display box and booklet number 2465, the other double broad 14k Visconti nib, 064/365, no packaging or papers. (2)

\$400 - 600

£330 - 500

201

AN OMAS LIMITED EDITION GREEN RESIN D-DAY PEN, A JORG HYSEK STAINLESS STEEL AND CARBON FIBER BALLPOINT "HYSEK PEN" IN BLACK LEATHER POCKET SHEATH WITH CLIP

Broad 18k nib, 3929/5,300, together with three Jorg Hysek leather sheathes, a Yard-O-Led sterling fountain pen and two ballpoint pens. (9)

\$500 - 800

£420 - 670

202

A MICHEL PERCHIN LIMITED EDITION STERLING SILVER AND BLUE ENAMEL FLEUR DE LIS FOUNTAIN PEN

1999

Medium 18k nib, silver marked for London with maker's mark JEP, 10/10, no packaging or papers.

\$800 - 1,200

£670 - 1,000







203



204



205



205



206



207

203

A MONTBLANC GOLD PLATED FRIEDRICH THE GREAT PATRON OF ART SERIES RETRACTABLE FOUNTAIN PEN

4810

Boheme sized, medium 18k nib, inked, no packaging or papers.

\$400 - 600

£330 - 500

204

A WALDMANN LIMITED EDITION JEWELLED BLUE ENAMEL AMERICA'S CUP FOUNTAIN PEN

18k nib, 034/150, no packaging or papers, *together with* A Montegrappa 32nd America's Cup commemorative fountain pen with silver and rubberised body and cap, and plastic display case. (2)

\$600 - 900

£500 - 750

205

A MICHEL AUDIARD SILVER AND BLACK RESIN FOUNTAIN PEN

18k nib, signed M.A., *together with* two airplane themed ballpoint pens.

(3)

\$500 - 800

£420 - 670

206

A MONTBLANC BLACK RESIN, STERLING SILVER, DIAMONDS AND PEARL GRETA GARBO COMMEMORATIVE EDITION 1905 FOUNTAIN PEN

Medium 18K gold nib, 0857/1905, no packaging or papers.

\$500 - 800

£420 - 670

207

A MICHEL PERCHIN LIMITED EDITION STERLING SILVER AND BLUE ENAMEL SERPENT FOUNTAIN PEN

2000

Medium 18k nib, silver marked for London, 00/500, no packaging or papers. (2)

\$800 - 1,200

£670 - 1,000

208

A MONTBLANC WRITERS SERIES VERMEIL, BLACK RESIN, AND SAPPHIRE AGATHA CHRISTIE FOUNTAIN PEN AND A MARCEL PROUST STERLING SILVER AND BLACK RESIN MECHANICAL PENCIL

18k nib, 0794/4810, the pencil part of a three piece set, 3874/400, no packaging or papers.

(2)

\$700 - 1,000

£580 - 830



208



208



210



211



212



213



214



209

A PARKER LIMITED EDITION BLACK AND PEARL ACRYLIC NORMAN ROCKWELL FOUNTAIN PEN

18K two-tone nib, 0405/3500, portfolio of color plates, lacking booklet, drawstring bag, briefcase, display box, *together with* a Parker blue and black marbled acrylic fountain pen, a Parker ballpoint pen, and a Parker fountain pen.

(5)

\$300 - 500

£250 - 420

210

A LOUIS VUITTON GREEN LEATHER DOC FOUNTAIN PEN AND A LOUIS VUITTON GOLDTONE BALLPOINT PEN

750 nib, no boxes or papers. (2)

\$300 - 400

£250 - 330

211

AN OMAS LIMITED EDITION STERLING SILVER, BLUE LACQUER, VERMEIL AND PORCELAIN GIACOMO CASANOVA FOUNTAIN PEN

Fine 18k oversize nib, 013/725, no packaging or papers.

\$400 - 600

£330 - 500

212

A KRONE LIMITED EDITION TEN COMMANDMENTS BALLPOINT PEN

27/35, no packaging or paperwork.

\$300 - 500

£250 - 420

213

A LOUIS VUITTON BLACK CROCODILE CARGO FOUNTAIN PEN

750 nib, 7861, no packaging or papers.

\$400 - 600

£330 - 500

214

A LOUIS VUITTON BROWN CROCODILE CARGO FOUNTAIN PEN

750 nib, 01359, no packaging or papers

\$400 - 600

£330 - 500



209





215

215
**A PILOT NAMIKI STERLING SILVER CRANE FOUNTAIN PEN
AND TWO BAMBOO FOUNTAIN PENS**

Medium 18k nib, *together with* a bronze bamboo form box.
(4)

\$500 - 700
£420 - 580



216

216
A COLLECTION OF TEN MONTBLANC PENS

Comprising a fountain pen on stand, a gold plated fountain pen, three resin ballpoint pens, two mixed resin and plate metal, and one plated metal ballpoint pens, one resin pen lacking cap, a resin fountain pen cap, a plated ballpoint cap and a resin highlighter pen.
(10)

\$200 - 300
£170 - 250

217
**A BULGARI 14K BALLPOINT PEN AND THREE OTHER BULGARI
BALLPOINT PENS**

Comprising a black Eccentric pen, a gold plated Eccentric pen, and a Koska silver metal and coral pen in the shape of a pencil, no packaging or papers.
(4)

\$500 - 800
£420 - 670



218

218
**A MONTBLANC MEISTERSTUCK SOLITAIRE 146 STERLING
SILVER FOUNTAIN PEN AND A BALLPOINT PEN**

Retailed by Tiffany & Co.
Medium 18k nib, no packaging or papers.
(2)

\$300 - 500
£250 - 420



219

A GROUP OF FOUR CARTIER AND THREE DUNHILL WRITING INSTRUMENTS

Comprising three Cartier black resin ballpoint pens and a Cartier perpetual calendar crayon, and a Dunhill perpetual calendar pen, a sterling Longitude AD pencil with scissors and a ballpoint pen with enamel clip, *together with* a Dunhill brown box.

(8)

\$400 - 600
£330 - 500



219

220

A CESAR BALDACCINI SILVER PLATED FOUNTAIN PEN AND SIX OTHER PENS

C0735, comprising a Visconti Copernicus fountain pen, 18k fine nib, two Jean Pierre Lepine fountain pens, 1995 and 1993, a Technomarine limited edition Maori ballpoint pen, a Pelikan Gunther Wagner celluloid fountain pen, and a gilt metal ballpoint pen, no packaging or papers.

(7)

\$500 - 800
£420 - 670



219

221

A MONTEGRAPPA LIMITED EDITION FERRARI BALLPOINT PEN AND THREE OTHER PENS

01/456, in red lacquer presentation case, with certificate and booklet, together with a Montegrappa 1912 red celluloid ball point pen, a Ferrari rollerball pen, an Omas Ferrari Challenge red resin fountain pen with broad 750 nib.

(4)

\$500 - 800
£420 - 670



221

222

A GROUP OF EIGHT WRITING INSTRUMENTS

Comprising a Waterman black resin and silvered metal fountain pen, 18k nib, a Waterman black resin and gold metal ballpoint pen, a Kenzo red resin ballpoint pen and damaged fountain pen, a Tiffany & Co. sterling ballpoint pen, a Georg Jensen silver and black resin fountain pen and a mechanical pencil, wide 18k nib, an Aurora yellow resin ballpoint pen and a Caran d'Ache for Patek Phillippe ballpoint pen.

(8)

\$300 - 500
£250 - 420



223

A GROUP OF CROSS PENS AND MECHANICAL PENCILS

Comprising three gold filled ballpoint pens, a stainless steel pencil and a black plastic ballpoint, *together with* seven various ballpoint pens, two ballpoint pens on stands, two rollerball pens, and three fountain pens

(17).

\$150 - 300
£130 - 250



223





224

AN 18K YELLOW GOLD 'TANK' WRISTWATCH, CARTIER

mechanical movement; with an 18k yellow gold deployant buckle, dial signed, case stamped 1214 23891 1432; gross weight approximately 37.7 grams; case length: 45mm.

\$3,000 - 5,000
£2,500 - 4,200



225

A LADY'S STAINLESS STEEL 'PASHA' WRISTWATCH, CARTIER

automatic movement; with stainless steel deployant buckle and box, case, dial and movement signed; width: 35mm.

\$1,000 - 1,500
£830 - 1,200



226

AN 18K YELLOW GOLD AND STAINLESS STEEL 'CHRONOMAT' CHRONOGRAPH WRISTWATCH, BREITLING

automatic movement; with an 18k yellow gold deployant clasp, case, dial and movement signed, case stamped D13050.1 9733; width: 30mm.

\$1,000 - 1,500
£830 - 1,200



227

AN 18K YELLOW GOLD WORLD TIME 'VOYAGER' WRISTWATCH EBEL

automatic movement; with an 18k yellow gold deployant clasp, case, dial, and movement signed; case numbered 34100304 8124913; gross weight approximately 94.4 grams; width: 40mm.

\$1,000 - 1,500
£830 - 1,200



228

A STAINLESS STEEL CHRONOGRAPH WRISTWATCH, EBEL

automatic movement; case and dial signed; case numbered 64501219 9134901; width: 38mm.

\$800 - 1,200
£670 - 1,000



229

A STEEL 'BUBBLE JOKER' CHRONOGRAPH WRISTWATCH, CORUM

automatic movement; with box, certificate, and deck of playing cards, case and dial signed; case numbered 498/777 285.240.20; width: 48mm.

\$1,000 - 1,500
£830 - 1,200





230 W

**A SET FOUR COMPOSITION STONE BUSTS DEPICTING THE
FOUR SEASONS ON PAINTED WOOD PEDESTALS**

20th century

height of busts 33in (83cm); height of pedestal 49 1/2in (125cm) (4)

\$4,000 - 6,000

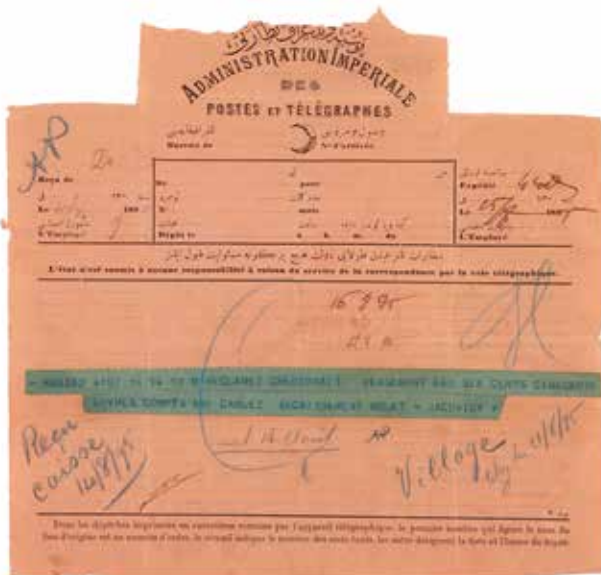
£3,300 - 5,000







231



231

231

A STANDARD OIL STOCK CERTIFICATE ISSUED TO JACOB JAY VANDERGRIFT

Engraved Document Signed ("John D. Rockefeller" and "Henry Flagler"), 1 p, 160 x 380 mm, Cleveland, Ohio, April 6, 1876, issuing 100 shares of Standard Oil capital stock to Vandergrift, also signed by the recipient at the left margin and on the reverse on April 5, 1882, as Vandergrift surrenders the present document for the delivery of 2000 shares of Standard Oil Trust, glazed and framed. WITH: an Ottoman Empire telegram sent from Constantinople to Baghdad with a coded payment instruction, dated August 1895.

J.J. Vandergrift was a steamboat captain and pipeline organizer who, in 1874, joined interests with Rockefeller and Flagler in Standard Oil.

\$800 - 1,200
£670 - 1,000



232 (detail)

232

ROBERT COMBAS (FRENCH, 1957)

Amar dessine un bonhomme!, 1982

signed, titled and dated 'Amar dessine un bonhomme! Combas 82' (on the reverse)
ink on paper

5 1/2 x 8 1/2 in.
14 x 22 cm.

\$700 - 1,000
£580 - 830

Provenance
Galerie Yvon Lambert, Paris

Exhibited
Paris, Galerie Yvon Lambert, *Robert Combas*, 20 March - 22 April 1982







233 W

A LARGE MODEL OF THE FARMAN III, ALSO KNOWN AS THE HENRY FARMAN 1909 BIPLANE

20th century

Width 78 1/2in (200cm)

\$1,000 - 1,500

£830 - 1,200

The early French aircraft was designed and built by Henry Farman in 1909 and went on to be widely copied setting many aviation records.



234 W

A GROUP OF FIVE WOOD BIRD CAGES

Primarily Indian, 20th century

height of largest 67in (170cm); width 48in (121cm); depth 30in (76cm) (5)

\$1,500 - 2,500

£1,200 - 2,100



235

A MOYNAT BLACK LEATHER TRUNK FITTED WITH TWO CASES

Paris, 20th century

The handle marked *Moynat, Paris*.

height of trunk 14in (35cm); width 42 1/2 (107cm); depth 17 1/2in (44cm)

\$400 - 600

£330 - 500







236

236

AFTER HENRI DE TOULOUSE-LAUTREC (1864-1901)

Three Lithographs,

Lithographs in colors, on paper, later reprints, each with stamp signatures and numbered 11/275, 63/275, 192/250, each with the blindstamp of the publisher Musee Toulouse Lautrec, with margins, each framed. (3)

Frame 33 x 25in (83.8 x 63.5cm) and 33 x 26 1/4in (83.8 x 66.6cm)

\$400 - 600

£330 - 500



237

237

LEONETTO CAPPIELLO (1875-1942)

Je ne Fume que le Nil, 1912

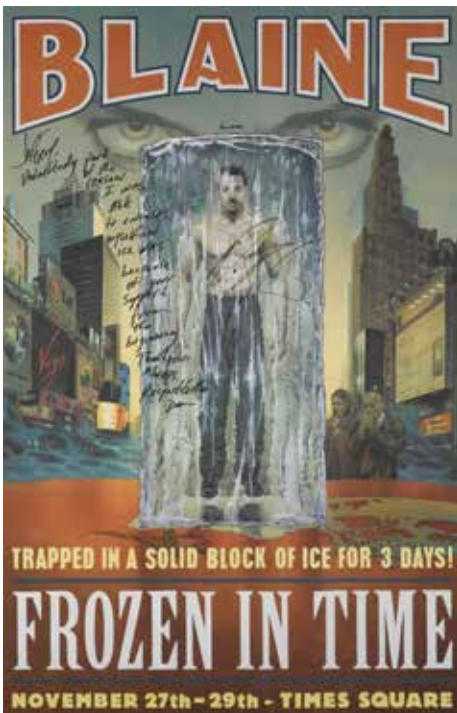
Lithograph in colors, on wove paper, printed by Vercasson, Paris, with margins, framed.

43 1/2 x 59 1/2in (110.5 x 151.1cm)

sheet 51 1/2 x 68in (130.8 x 172.7cm)

\$500 - 700

£420 - 580



238

238

DAVID BLAINE: FROZEN IN TIME

Times Square, November 27-29, 2000. U.S. one sheet poster, inscribed, "Jeffrey, / Undoubtedly part of the reason I was able to encase myself in ice was because of your support from the beginning. Thank you always, / Respectfully, / David" to front of poster. In a stunt that rivaled Houdini and garnered international attention, Blaine encased himself in a block of ice for 63 hours, 42 minutes, and 15 seconds while being observed in the middle of Times Square. Though he was removed earlier than planned because of fear for his safety, he went on to perform similar stunts of endurance successfully. Overall: 28 x 41 x 1 in.; within frame: 24.5 x 37.5 in.

\$300 - 500

£250 - 420





240

239

ÉLIANE FRANCK (B. 1966)

Untitled (John Lennon), 1992

signed, inscribed and dated 'E. FRANCK N.Y 92' (on the reverse)

acrylic, metal and plastic on canvas

48 x 27 7/8 in.

121.9 x 70.8 cm.

\$1,000 - 1,500

£830 - 1,200



239

240

RENÉE NIKLAN (B. 1936)

Untitled, 2005

signed and dated 'Renee Niklan 2005' (lower right)

oil on canvas

47 x 47 in.

119.4 x 119.4 cm.

\$500 - 1,000

£420 - 830



241

241

AFTER FERNAND LÉGER (1881-1955)

Les loisirs sur fond rouge,

Offset lithograph in colors, on wove paper, bearing a stamp signature and numbered 250/250, with the blindstamp of the publisher Musée Biot, France, with margins, framed.

Frame 28 1/2 x 37 1/4 in (72.4 x 94.6cm)

\$300 - 400

£250 - 330





242

242

A MUGHAL STYLE MINIATURE

A prince listening to a musician
opaque watercolor on paper
18 x 13.5cm (7 1/16 x 5 5/16in)

\$500 - 800

£420 - 670



243

243

BORIS ZAPOROGETS (RUSSIAN, BORN 1935)

On the beach
signed in cyrillic (lower right)
oil on canvas
31 x 39 1/2in (78.8 x 100.3cm)

\$700 - 1,000

£580 - 830



244

244

CONTINENTAL SCHOOL (20TH CENTURY)

A summer's day at the beach
indistinctly signed 'L.T.Moretti' (lower center right)
watercolour, gouache and pen and ink on paper
19 5/8 x 24in (49.8 x 61cm)

\$600 - 800

£500 - 670



245

EDWARD HAGEDORN (1902-1982)

Torso-Front, circa 1930

tempera on paper

24 x 17 3/4 in.

61 x 45 cm.

\$500 - 700

£420 - 580

Provenance

Walter F. Maibaum Fine Arts, New York

Acquired directly from the above by the present owner



246

EDWARD HAGEDORN (1902-1982)

Torso-Back, circa 1930

tempera on paper

24 x 17 3/4 in.

61 x 45 cm.

\$500 - 700

£420 - 580

Provenance

Walter F. Maibaum Fine Arts, New York

Acquired directly from the above by the present owner



247

EDWARD HAGEDORN (1902-1982)

Reclining Torso, circa 1930

tempera on paper

18 1/8 x 24 in.

46 x 61 cm.

\$500 - 700

£420 - 580

Provenance

Walter F. Maibaum Fine Arts, New York

Acquired directly from the above by the present owner





248

248
ANTOINE VERGLAS (B. 1957)

Untitled

signed 'Antoine Verglas' (lower right)
 black and white photograph

19 3/8 x 14 3/8 in.
 49.2 x 36.5 cm.

\$3,000 - 5,000
£2,500 - 4,200

249
ROBERT STANLEY (1932-1997)

Marilyn, 1964
 signed and dated 'BOB STANLEY 1964' (on the reverse)
 oil on canvas
 21 x 14 in.
 53.3 x 35.6 cm.

\$1,000 - 1,500
£830 - 1,200



249

250
MARK LANCASTER (B. 1938)

Marilyn, 1987-88 (5)

(i): signed, titled, numbered and dated twice 'Mark Lancaster Marilyn 22-30 Jan '88, 1988' (on the reverse)
 (ii): signed, titled and dated 'Mark Lancaster Marilyn Aug 5 1987' (on the reverse)
 (iii): signed, titled, and dated twice 'Mark Lancaster Marilyn Aug 3 1987' (on the reverse)
 (iv): signed, titled and dated twice 'Mark Lancaster Marilyn Dec. 24 1987' (on the reverse)
 (v): signed, titled and dated twice 'Mark Lancaster Marilyn Oct 13-15 1987' (on the reverse)
Each: acrylic on canvas

Each:
 12 x 10 in.
 30.5 x 25.4 cm.
 (5)

\$2,000 - 3,000
£1,700 - 2,500



250 (one from a set of five)





251

BAI LIEN HUNG (B. 1957)

Untitled, 2004 (2)

Each: inscribed indistinctly and dated '04' (on the reverse); inscribed indistinctly twice (on the overlap)

mixed media and lacquer on panel

48 x 48 in.

122 x 122 cm.

(2)

\$3,000 - 5,000

£2,500 - 4,200





252

ENEAS CAPABLO (B. 1976)

Jeffrey Steiner, 2002

signed and dated 'Eneas 2002' (on the reverse)

spray paint and acrylic on canvas

48 x 48 in.

121.9 x 121.9 cm.

\$3,000 - 5,000

£2,500 - 4,200



253

HUANG YAN (B. 1966)

Guns, 2005

inscribed in Chinese, numbered and dated '2/6

2005' (lower right)

digital color print

31 x 75 in.

80 x 189 cm.

This work is number two from the edition of six.

\$2,000 - 3,000

£1,700 - 2,500



254

PETER TUNNEY (B. 1961)

Untitled

mixed media on vintage printed map

39 3/4 x 52 1/8 in.

101 x 132.4 cm.

\$4,000 - 6,000

£3,300 - 5,000



255

CHAYAN KHOI (B. 1963)

Untitled (Golden buddha)

photographic lightbox

46 x 85 1/8 in.

116.8 x 215.9 cm.

\$2,000 - 3,000

£1,700 - 2,500





256

FRIEDRICK STICHS (1886-1979)

Woman in Profile

Second quarter 20th century

Made by Puhl & Wagner, Berlin, glass tesserae

height 68 1/2in (173cm); width 40 1/2in (102cm)

\$3,000 - 5,000

£2,500 - 4,200

Provenance

August Wagner Archive

Florian Wagner

Private Collection, London, acquired from the above, 1982

Acquired from the above, 2003

Thence by Descent



257

CHARLES CRODEL (1894-1973)

Two panel from the Konditorei Storch, Berlin

Circa 1950

Made by Puhl & Wagner, Berlin, glass tesserae

height of larger 48in (121); width 39 1/2in (100cm)

\$2,000 - 4,000

£1,700 - 3,300

Provenance

August Wagner Archive

Florian Wagner

Private Collection, London, acquired from the above, 1982

Acquired from the above, 2003

Thence by Descent



258

JOSEF LUDWIG FISCHER (1879-UNKNOWN)

After Saint Agnes in the procession of virgin martyrs at Sant'Apollinare Nuovo, Ravenna

Second quarter 20th century

Made by Puhl and Wagner, Berlin, in two parts, glass tesserae
height 100in (254cm); width 40 1/2in (102cm)

\$3,000 - 5,000

£2,500 - 4,200

Provenance

August Wagner Archive

Florian Wagner

Private Collection, London, acquired from the above, 1982

Acquired from the above, 2003

Thence by Descent



259

JAN THORN PRIKKER (1868-1932)

The Thinker

Circa 1925

Made by Puhl & Wagner, Berlin, glass terresae

The back stenciled R1040, Detail A.D. Abendmahl, ENTW: Prof. Thorn Prikker, AUSF: Puhl-Wagner-Heinersdorf, Mosaik Größe, 81,5/140, Gewicht, 41kg.

height 56 1/4in (142cm); width 33 1/2in (85cm)

\$4,000 - 6,000

£3,300 - 5,000

Provenance

August Wagner Archive

Florian Wagner

Private Collection, London, acquired from the above, 1982

Acquired from the above, 2003

Thence by Descent





260 (one of a pair)

260 W

JIN FENG

In My Image: Nation Guardian God of the East; In My Image: Growth Guardian God of the South

Carved pine

height 66 1/2 x width 41 11/16in. (169 x 106cm)

(2)

\$3,000 - 5,000

£2,500 - 4,200

Provenance

Hanart TZ Gallery, Hong Kong, 2003

261

TWO JAPANESE PARCEL GILT BRONZE FIGURES OF SAMURAI

Bearing the signatures of Yoshimitsu and Gyokko, Meiji Period

Each on a wood base.

height of taller 17in (43cm)

\$400 - 600

£330 - 500

262

A JAPANESE IMARI PORCELAIN CHARGER

Meiji period

diameter 22 1/6in (56cm)

\$400 - 600

£330 - 500

263

A COLLECTION OF CONTINENTAL COLORED AND CLEAR GLASS ARTICLES

Comprising a pair of over sized goblets with decoupage decoration, six perfume bottles, a pitcher, a stoppered ewer, a covered bowl, and a low bowl.

heights 4 1/4in (11cm) to 10 1/2in (26.6cm) (12)

\$500 - 800

£420 - 670

264

21ST CENTURY SCHOOL

A cold painted bronze circular bowl decorated in red, orange, black, and blue abstract.

Signed indistinctly and dated 2000 16 x 51cm (6 1/4 x 20 1/16in).

\$500 - 1,000

£420 - 830



265

A GROUP OF ART REFERENCE BOOKS (45)

Approximately 45 books,

\$300 - 500

£420 - 670

266

HOWARD CHANDLER CHRISTY (1872-1952)

Gee I Wish I were a Man, I'd Join the Navy, 1917

Lithograph in colors, on paper, the full sheet,
framed.

Frame 43 x 28in (109.2 x 71.1cm)

\$300 - 500

£250 - 420

267

**AFTER ANTOINE IGNACE MELLING (1763-1831),
BY PILLEMÉNT**

Port de Constantinople,

Engraving, on paper, with margins, framed.

Frame 32 x 46in (81.2 x 116.8cm)

\$300 - 500

£250 - 420

268

UNKNOWN ARTIST

Untitled, 1980

signed indistinctly and dated '80' (on the stretcher)

oil, ink and collage on canvas

13 3/4 x 8 3/4 in.

34.9 x 22.2 cm.

\$300 - 500

£250 - 420

269

UNKNOWN ARTIST

Pushy Tushy Cushy

mixed media on paper (in 3 parts)

Overall: 36 x 10 1/2 in.

91.4 x 26.7 cm.

\$500 - 700

£420 - 580



261



261





270

270

PIERRE ET GILLES (B. 1950 AND 1953)

La Rose et le Couteau - Fabrice, 1998

signed, titled and dated 'La Rose et le Couteau Fabrice 1998 pierre ♥ gilles' (on the reverse)

hand painted gelatin silver print in artist's frame

18 1/8 x 14 7/8 in.

46 x 35.5 cm.

This work is unique.

\$5,000 - 7,000

£4,200 - 5,800

Provenance

Galerie Jerome de Noirmont, Paris

Acquired directly from the above by the previous owner

Thence by descent to the present owner

Exhibited

Paris, Galerie Jerome de Noirmont, *Pierre et Gilles: Douce Violence*, 4 December 1998 - 30 January 1999

271

PIERRE ET GILLES (B. 1950 AND 1953)

Vive la France, 2006

signed, titled, inscribed and dated 'VIVE LA FRANCE Serge, Moussa, Roberto 2006 pierre ♥ gilles' (on the reverse)

pigment print on canvas in artists' frame

57 3/8 x 49 3/8 in.

145.9 x 125.5 cm.

This work is unique.

\$50,000 - 70,000

£42,000 - 58,000

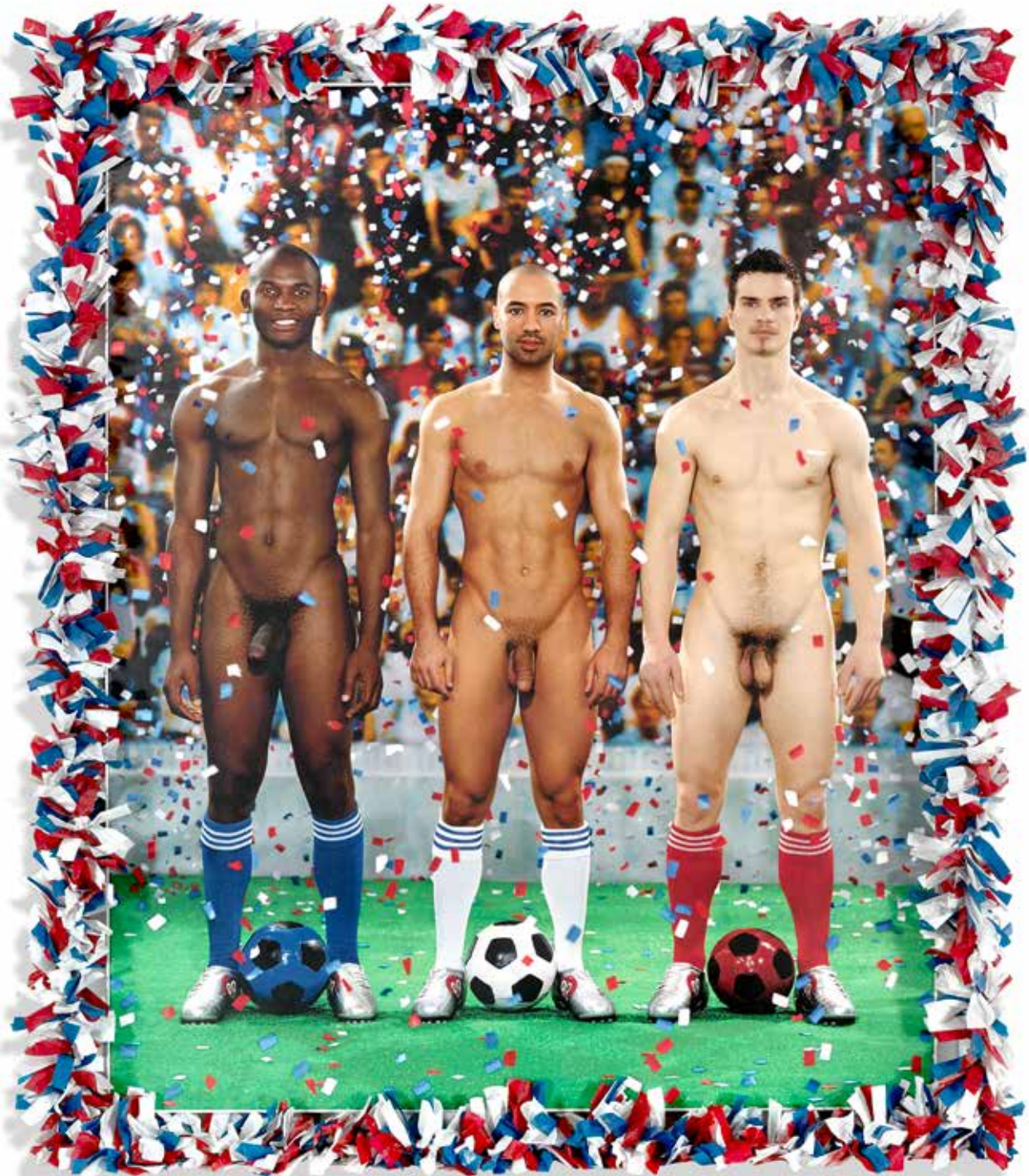
Provenance

Galerie Jerome de Noirmont, Paris

Acquired directly from the above by the previous owner

Thence by descent to the present owner





271

Exhibited

Paris, Galerie Jerome de Noirmont, *Pierre et Gilles - Un monde parfait*, 10 November 2006 - 10 January 2007

Paris, Jeu de Paume, *double je 1976-2007*, 26 June - 23 September 2007

Vienna, Leopold Museum, *Nude Men: from 1800 to the present day*, 19 October 2012 – 04 March 2013

Paris, Musée d'Orsay, *Masculin/Masculin. L'homme nu dans l'art de 1800 à nos jours*, 24 September 2013 – 12 January 2014

Le Havre, Musée d'art moderne André Malraux, *Pierre et Gilles: Claire-Obscur*, 27 May - 20 August 2017 (this exhibition also traveled to: Brussels, Musée d'ixelles, 2017)





272 W

**A NORMAN FOSTER GLASS TOP STEEL
NORMOS TABLE**

Made by Tecno

height 31in (78cm); diameter 43in (110cm)

\$2,000 - 3,000

£1,700 - 2,500

273 W

A SET OF FOUR BLACK LEATHER ARMCHAIRS

20th/21st century

*height 27in (69cm); width 51in (130cm); depth 38
1/2in (99cm) (4)*

\$2,000 - 3,000

£1,700 - 2,500

Previously with Gucci.





274

MARC QUINN (B. 1964)

Sphinx, 2006

inscribed 'BK' (lower left); titled 'SPHINX' (lower center); signed,
inscribed and dated 'A Bunny 2/06 Marc Quinn' (lower right)

gouache and graphite on paper on board

61 3/8 x 38 7/8 in.

155.9 x 98.7 cm.

\$12,000 - 18,000

£10,000 - 15,000

Provenance

Hopkins Galerie, Paris

Acquired directly from the above by the present owner in 2006





275

LARRY RIVERS (AMERICAN, 1923-2002)

Dread, 1983-1995

signed and dated 'Larry Rivers '83' (lower right)

acrylic, graphite and pastel on paper board construction and panel

29 1/2 x 25 1/4 x 1 3/4 in.

74.9 x 64.1 x 4.4 cm.

\$15,000 - 20,000

£12,000 - 17,000

Provenance

Acquired directly from the artist by the previous owner

Thence by descent to the present owner





276

JULES OLITSKI (1922-2007)

Baphomet of Mendes, 1973-74

signed, titled, inscribed, numbered and dated 'Jules Olitski 1973-4
"Baphomet of Mendes" 75" x 45" water base acrylic No. 73/214' (on
the reverse)

water base acrylic on canvas

75 x 45 in.

190.5 x 114.3 cm.

\$15,000 - 20,000

£12,000 - 17,000

Provenance

Galerie Gerald Piltzer, Paris

Acquired directly from the above by the present owner in 2008





277

RICHARD PETTIBONE (B. 1938)

Andy Warhol, '32 Cans of Campbell's Soup,' 1962, 1987

Each: signed with artist's initials, numbered and dated 'R.P. 1987 7-25'
(on the overlap)

synthetic polymer and silkscreen ink on thirty-two canvases

Each: 7 7/8 x 5 1/8 in.

20 x 13 cm.

This work is number seven from the edition of 25.

\$150,000 - 250,000

£120,000 - 210,000

Provenance

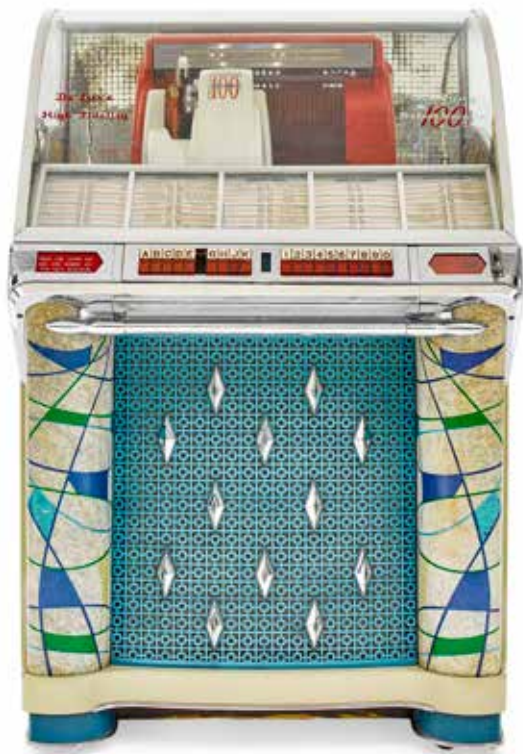
O.K. Harris, New York











278 W

A SEEBURG 100 SELECT-O-MATIC JUKEBOX

Circa 1952

height 52 1/2in (164c); width 35in (89cm); depth 26 1/2in (68cm)

\$2,000 - 3,000

£1,700 - 2,500

The Seeburg M100C is possibly best well known for its role in the opening credits to American television show "Happy Days".



279 W

A 10 CENT VENDO COCA COLA BOTTLE VENDING MACHINE

Circa 1956

Patent number 2791889.

height 57in (145cm); width 21 1/5in (55cm); depth 19 1/2in (50cm)

\$1,800 - 2,200

£1,500 - 1,800



280 W

A ROWE AMI 200 VIDEO AND RECORD SELECTIONS JUKEBOX

Triangle Industries, serial number 108494.

height 53 1/2in (135cm); width 41 1/4in (104cm); depth 26 1/2in (67cm)

\$400 - 600

£330 - 500



281 W

A 25 CENT MILLS OLD RENO '49 LIGHT-UP COWBOY FORM SLOT MACHINE

Made by Aristocrat.

height 76 1/2in (195cm); width 24 1/2in (63cm); depth 18 1/2in (47cm)

\$1,000 - 1,500

£830 - 1,200



282 W

A WURLITZER 850 'PEACOCK' JUKEBOX

American, 1941

With twenty four 78rpm discs.

height 67in (170cm); width 37in (93cm); depth 26in (66cm)

\$25,000 - 35,000

£21,000 - 29,000

The "Peacock" jukebox was at its launch in 1941 considered to be the jukebox of the decade and it was the biggest, the showiest and the most "jukeboxy" of all the jukeboxes. The machine was launched just prior to the US entry in the Second World War and it was to be Wurlitzer's last full scale jukebox before the war. It was almost as if the elaborate design of the "Peacock" jukebox was the final closing scene by the designer Paul Fueller.

END OF SALE



Index

A		
Adam, Édouard	26, 27, 28	
B		
Bergman, Franz	105	
Bertaux, Jacques	109	
C		
Capablo, Eneas	252	
Cappiello, Leonetto	237	
Catlin, George	132	
Cazaban, Louis Joseph	22	
Christy, Howard Chandler	266	
Cohane, M.B.	20, 52	
Continental School (20th century)	244	
E		
Espiennes, J. P.	113, 114	
F		
Favero, E.	29	
Feng, Jin	260	
Flemish School	131	
Fragonard, Jean-Honoré	123	
Franck, Éliane	239	
G		
German School (19th Century)	32	
Gittlin, Ethel	24	
Goyen, Jan Josefsz van	31	
Gutman, Nachum	48, 49	
H		
Hagedorn, Edward	245, 246, 247	
Herring, After John Frederick	141	
Hugnet, Georges	151	
Hung, Bai Lien	251	
I		
Italian School	58, 59	
J		
Jollois, After Jean-Baptiste Prosper	140	
K		
Khoi, Chayan	255	
L		
Lancaster, Mark	250	
Le Gac, Jean	111	
Léger, After Fernand	241	
Leprince, Jean-Baptiste	122	
M		
Martins, Sylvia	148	
Marval, Jacqueline	112	
Mason, Frank Henry	25	
McDermott & McGough	149	
Melling, After Antoine Ignace	267	
Munduwalawala, Ginger Riley	147	
N		
Niklan, Renée	240	
North Italian School	33	
O		
Olitski, Jules	276	
Q		
Quinn, Marc (B. 1964)	274	
P		
Pettibone, Richard	277	
Pierre et Gilles	270, 271	
Piranesi, Giovanni Battista	82, 83, 84, 85, 86	
Prévert, Jacques	150	
R		
René, Jean-Jacques	54	
Roh, Franz	47	
Rubens, Sir Peter Paul	60	
S		
Stanley, Robert	249	
Swiss School	21	
T		
Toulouse-Lautrec, After Henri de	236	
Tunney, Peter	254	
U		
Unknown Artist	46, 110, 142, 143, 144, 268, 269	
V		
Various Artists	50	
Velasquez, Jose Antonio	23	
Verglas, Antoine	248	
Y		
Yan, Huang	253	
Z		
Zach, Bruno	185	
Zaporogets, Boris	243	
Zusters, Reinis	145, 146	



Bonhams

AUCTIONEERS SINCE 1793

The Contents of a 19th Century Baltic Villa

New Bond Street, London | 16 October 2019 at 10am

ENQUIRIES

Charlie Thomas
+44 (0) 20 7468 8358
charlie.thomas@bonhams.com
[bonhams.com/privatecollections](https://www.bonhams.com/privatecollections)

Bonhams

AUCTIONEERS SINCE 1793



Nicky Haslam

The Contents of The Hunting Lodge

New Bond Street, London | 20 November 2019 at 3pm

ENQUIRIES

Charlie Thomas
+44 (0) 20 7468 8358
charlie.thomas@bonhams.com
[bonhams.com/privatecollections](https://www.bonhams.com/privatecollections)

Photo:
Simon Upton/The Interior Archive

Bonhams

AUCTIONEERS SINCE 1793



The Elegant Home

Los Angeles | November 18-19, 2019

INQUIRIES

+1 (323) 436 5463

furniture.us@bonhams.com

[bonhams.com/eleganthome](https://www.bonhams.com/eleganthome)

**A GOOD AND IMPOSING PARCEL GILT
AND PATINATED BRONZE FIGURAL
GROUP: GLORIA VICTUS**

After the model by Marius-Jean-Antonin
Mercie, 103in high

\$15,000 - 25,000

Conditions of sale

The following Conditions of Sale, as amended by any published or posted notices or verbal announcements during the sale, constitute the entire terms and conditions on which property listed in the catalog shall be offered for sale or sold by Bonhams & Butterfields Auctioneers Corp. and any consignor of such property for whom Bonhams acts as agent. By participating in this sale, you agree to be bound by these terms and conditions.

If live online bidding is available for the subject auction, additional terms and conditions of sale relating to online bidding will apply; see www.bonhams.com/WebTerms for the supplemental terms. As used herein, "Bonhams," "we" and "us" refer to Bonhams & Butterfields Auctioneers Corp.

1. As used herein, the term "bid price" means the price at which a lot is successfully knocked down to the buyer. The term "purchase price" means the aggregate of (a) the bid price, (b) a PREMIUM retained by us and payable by the buyer (the "buyer's premium"), EQUAL TO 27.5% OF THE FIRST \$3,000 OF THE BID PRICE, 25% OF THE AMOUNT OF THE BID PRICE ABOVE \$3,000 UP TO AND INCLUDING \$400,000, 20% OF THE AMOUNT OF THE BID PRICE ABOVE \$400,000 UP TO AND INCLUDING \$4,000,000, AND 13.9% OF THE AMOUNT OF THE BID PRICE OVER \$4,000,000, and (c) unless the buyer is exempt by law from the payment thereof, any Alabama, Arizona, California, Colorado, Connecticut, Florida, Georgia, Hawaii, Idaho, Illinois, Iowa, Indiana, Kentucky, Louisiana, Maine, Massachusetts, Michigan, Minnesota, Nevada, New Jersey, New York, North Carolina, Ohio, Pennsylvania, Rhode Island, Texas, Utah, Virginia, Washington, D.C., Washington, Wisconsin, Wyoming or other state or local sales tax (or compensating use tax) and other applicable taxes. With regard to New York sales tax, please refer to the "Sales and Use Tax" section of these Conditions of Sale.

2. In order to bid at the sale, prospective bidders must submit to Bonhams a completed bidder registration form (appearing at the end of this catalog) and any other requested information or references. New bidders and bidders who have not recently updated their registration information must pre-register to bid at least two business days before the sale. Individuals will be required to provide government-issued proof of identity and proof of address. Entity clients will be required to provide documentation including confirmation of entity registration showing the registered name, confirmation of registered address, documentary proof of officers and beneficial owners, proof of authority to transact on behalf of the entity and government-issued proof of identity for the individual who is transacting on the entity's behalf.

We may also request a financial reference and /or deposit from bidders before approving the bidder registration. In the event a deposit is submitted and you are not the successful bidder, your deposit will be returned to you. If you are the successful bidder, any such deposit will be credited to offset the appropriate portion of the purchase price.

We reserve the right to request further information, including regarding the source of funds, in order to complete bidder identification and registration procedures (including completing any anti-money laundering and/or anti-terrorism financing checks we may require) to our satisfaction. If our bidder identification and registration procedures are not satisfied, we may, in our sole discretion, decline to register any bidder or reject any bid or cancel any sale to such bidder.

Every bidder shall be deemed to act as a principal unless prior to the commencement of the sale there is a written acceptance by Bonhams of a bidder registration form completed and signed by the principal which clearly states that the authorized bidding agent is acting on behalf of the named principal. Absent such written acceptance by Bonhams, any person placing a bid as agent on behalf of another (whether or not such person has disclosed that fact or the identity of the principal) may be jointly and severally liable with the principal under any contract resulting from the acceptance of a bid. Every bidder shall be responsible for

any use of its assigned paddle or bidding account, regardless of the circumstances.

3. You represent and warrant that: (i) you have provided us with true and correct copies of valid identification and proof of residence and, if applicable, financial and/or corporate documents; (ii) neither you, your principal (if applicable, and subject to Bonhams' prior written acceptance pursuant to paragraph 2 above), nor any individual or entity with a beneficial or ownership interest in either or in the purchase transaction is on the Specially Designated Nationals List maintained by the Office of Foreign Assets Control of the U.S. Department of the Treasury nor subject to any other sanctions or embargo program or regulation in effect in the United States, European Union, England and Wales, or other applicable jurisdictions; (iii) if you are acting as an agent for a principal, you have conducted appropriate due diligence into such principal, and agree that Bonhams shall be entitled to rely upon such due diligence, you will retain adequate records evidencing such due diligence for a period of five (5) years following the consummation of the sale, and will make these records available for inspection upon Bonhams' request; (iv) neither the purchase transaction (including your bidding activity) nor the purchase funds are connected with nor derive from any criminal activity, and they are not designed to nor have they or shall they, violate the banking, anti-money laundering, or currency transfer laws or other regulations (including without limitation, import-export laws) of any country or jurisdiction, or further any other unlawful purpose, including without limitation collusion, anti-competitive activity, tax evasion or tax fraud.

You acknowledge and agree that we may rely upon the accuracy and completeness of the foregoing warranties.

4. On the fall of the auctioneer's hammer, the highest bidder shall have purchased the offered lot in accordance and subject to compliance with all of the conditions set forth herein and (a) assumes full risk and responsibility therefor, (b) if requested will sign a confirmation of purchase, and (c) will pay the purchase price in full or such part as we may require for all lots purchased. No lot may be transferred.

Unless otherwise agreed, payment in good, cleared funds is due and payable within five (5) business days following the auction sale. Whenever the buyer pays only a part of the total purchase price for one or more lots purchased, we may apply such payments, in our sole discretion, to the lot or lots we choose. Payment will not be deemed made in full until we have received good, cleared funds for all amounts due. Title in any purchased property will not pass until full and final payment has been received by Bonhams. Accounts must be settled in full before property is released to the buyer. In the event property is released earlier, such release will not affect the passing of title or the buyer's obligation to timely remit full payment.

We reserve the right to refuse to accept payment from a source other than the registered bidder or buyer of record. Once an invoice is issued, we cannot change the buyer's name on an invoice.

Payment for purchases must be made in the currency in which the sale is conducted and may be made in or by (a) cash, up to the amount of US \$5,000 (whether by single or multiple related payments), or the equivalent in the currency in which the sale is conducted, (b) cashier's check or money order, (c) personal check with approved credit drawn on a U.S. bank, (d) wire transfer or other immediate bank transfer, or (e) Visa, MasterCard, American Express or Discover credit, charge or debit card, provided that the registered bidder or buyer's name is printed on the card. A processing fee will be assessed on any returned checks.

To the fullest extent permitted by applicable law, the buyer grants us a security interest in the property, and we may retain as collateral security for the buyer's obligations to us, any property and all monies held or received by us for the account of the buyer, in our possession. We also retain all rights of a secured party under the California Commercial

Code, and you agree that we may file financing statements without your signature. If the foregoing conditions or any other applicable conditions herein are not complied with, in addition to all other remedies available to us and the consignor by law, we may at our election: (a) hold the buyer liable for the full purchase price and any late charges, collection costs, attorneys' fees and costs, expenses and incidental damages incurred by us or the consignor arising out of the buyer's breach; (b) cancel the sale, retaining as liquidated damages all payments made by the buyer; and/or (c) cancel the sale and/or resell the purchased property, at public auction and/or by private sale, and in such event the buyer shall be liable for the payment of all consequential damages, including any deficiencies or monetary losses, and all costs and expenses of such sale or sales, our commissions at our standard rates, all other charges due hereunder, all late charges, collection costs, attorneys' fees and costs, expenses and incidental damages. In addition, where two or more amounts are owed in respect of different transactions by the buyer to us, to Bonhams 1793 Limited and/or to any of our other affiliates, subsidiaries or parent companies worldwide within the Bonhams Group, we reserve the right to apply any monies paid in respect of a transaction to discharge any amount owed by the buyer. If all fees, commissions, premiums, bid prices and other sums due to us from the buyer are not paid promptly as provided in these Conditions of Sale, we reserve the right to impose a finance charge equal to 1.5% per month (or, if lower, the maximum nonusurious rate of interest permitted by applicable law), on all amounts due to us beginning on the 31st day following the sale until payment is received, in addition to other remedies available to us by law.

5. We reserve the right to withdraw any property and to divide and combine lots at any time before such property's auction. Unless otherwise announced by the auctioneer at the time of sale, all bids are per lot as numbered in the catalog and no lots shall be divided or combined for sale.

6. We reserve the right to reject a bid from any bidder, to split any bidding increment, and to advance the bidding in any manner the auctioneer may decide. In the event of any dispute between bidders, or in the event the auctioneer doubts the validity of any bid, the auctioneer shall have sole and final discretion either to determine the successful bidder, re-open the bidding, or to cancel the sale and re-offer and resell the article in dispute. If any dispute arises after the sale, our sales records shall be conclusive in all respects.

We further reserve the right to cancel the sale of any property if (i) you are in breach of your representations and warranties as set forth in paragraph 3 above; (ii) we, in our sole discretion, determine that such transaction might be unlawful or might subject Bonhams or the consignor to any liability to any third party; or (iii) there are any other grounds for cancellation under these Conditions of Sale.

7. If we are prevented by fire, theft or any other reason whatsoever from delivering any property to the buyer or a sale otherwise cannot be completed, our liability shall be limited to the sum actually paid therefor by the buyer and shall in no event include any compensatory, incidental or consequential damages.

8. All lots in the catalog are offered subject to a reserve unless otherwise indicated in the catalog. The reserve is the confidential minimum bid price at which such lot will be sold and it does not to exceed the low estimate value for the lot. If a lot is offered subject to a reserve, we may implement such reserve by bidding on behalf of the consignor, whether by opening bidding or continuing bidding in response to other bidders until reaching the reserve. If we have an interest in an offered lot and the proceeds therefrom other than our commissions, we may bid up to the reserve to protect such interest. If the auctioneer determines that any opening or subsequent bid is below the reserve for a lot, (s)he may reject such opening bid and withdraw the item from sale. **CONSIGNORS ARE NOT ALLOWED TO BID ON THEIR OWN ITEMS.**

Conditions of sale - Continued

9. Other than as provided in the Limited Right of Rescission with respect to identification of authorship, all property is sold "AS IS" and any statements contained in the catalog or in any advertisement, bill of sale, announcement, condition report, invoice or elsewhere as to period, culture, source, origin, media, measurements, size, quality, rarity, provenance, importance, exhibition and literature of historical relevance, merchantability, fitness for a particular purpose, or physical condition ARE QUALIFIED STATEMENTS OF OPINION AND NOT REPRESENTATIONS, WARRANTIES, OR ASSUMPTION OF LIABILITY. Neither Bonhams nor the consignor shall be responsible for any error or omission in the catalog description of any property. No employee or agent of Bonhams is authorized to make on our behalf or on that of the consignor any representation or warranty, oral or written, with respect to any property.

10. All purchased property shall be removed from the premises at which the sale is conducted by the date(s) and time(s) set forth in the "Buyer's Guide" portion of this catalog. If not so removed, daily storage fees will be payable to us by the buyer as set forth therein. We reserve the right to transfer property not so removed to an offsite warehouse at the buyer's risk and expense, as set forth in more detail in the "Buyer's Guide." Packing and handling of purchased lots are the responsibility of the buyer and at the buyer's entire risk, as are the identification, application for, and cost(s) of obtaining of any necessary export, import, restricted material (e.g. endangered species) or other permit for such lots.

For an additional fee, Bonhams may provide packing and shipping services for certain items as noted in the "Buyer's Guide" section of the catalog.

11. The copyright in the text of the catalog and the photographs, digital images and illustrations of lots in the catalog belong to Bonhams or our licensors. You will not reproduce or permit anyone else to reproduce such text, photographs, digital images or illustrations without our prior written consent. Bonhams and the consignor make no representation or warranty as to whether the buyer acquires any copyrights on the purchase of an item of Property.

12. Bonhams may, in our discretion, as a courtesy and free of charge, execute bids on your behalf if so instructed by you, provided that neither Bonhams nor our employees or agents will be liable for any error or default (whether human or otherwise) in doing so or for failing to do so. Without limiting the foregoing, Bonhams (including our agents and employees) shall not be responsible for any problem relating to telephone, online, or other bids submitted remotely through any means, including without limitation, any telecommunications or internet fault or failure, or breakdown or problems with any devices or online platforms, including third-party online platforms, regardless of whether such issue arises with our, your, or such third-party's technology, equipment, or connection. By participating at auction by telephone or online, bidders expressly consent to the recording of their bidding sessions and related communications with Bonhams and our employees and agents, and acknowledge their acceptance of these Conditions of Sale as well as any additional terms and conditions applicable to any such bidding platform or technology.

13. These Conditions of Sale shall bind the successors and assigns of all bidders and buyers and inure to the benefit of our successors and assigns. No waiver, amendment or modification of the terms hereof (other than posted notices or oral announcements during the sale) shall bind us unless specifically stated in writing and signed by us. No act or omission of Bonhams, its employees or agents, nor any failure thereof to exercise any remedy hereunder, shall operate or be deemed to operate as a waiver of Bonhams' rights under these Conditions of Sale. If any part of these Conditions of Sale is for any reason invalid or unenforceable, the rest shall remain valid and enforceable.

14. These Conditions of Sale and the buyer's and our respective rights and obligations hereunder shall be governed

by and construed and enforced in accordance with the laws of the State of California. Any dispute, controversy or claim arising out of or relating to this agreement, or the breach, termination or validity thereof, brought by or against Bonhams (but not including claims brought against the consignor by the buyer of lots consigned hereunder) shall be resolved by the procedures set forth below.

15. You accept and agree that Bonhams will hold and process your personal information and may share and use it as required by law and as described in, and in line with Bonhams' Privacy Policy, available at website at www.bonhams.com/legals/. If you desire access, update, or restriction to the use of your personal information, please email data.protection@bonhams.com.

SALES AND USE TAX

New York sales tax is charged on the hammer price, buyer's premium and any other applicable charges on any property collected or delivered in New York State, regardless of the state or country in which the buyer resides or does business. Buyers who make direct arrangements for collection by a shipper who is considered a "private" or "contract" carrier by the New York Department of Taxation and Finance will be charged New York sales tax, regardless of the destination of the property. Property collected for delivery to a destination outside of New York by a shipper who is considered a "common carrier" by the New York Department of Taxation and Finance (e.g. United States Postal Service, United Parcel Service, and FedEx) is not subject to New York sales tax, but if it is delivered into any state in which Bonhams is registered or otherwise conducts business sufficient to establish a nexus, Bonhams may be required by law to collect and remit the appropriate sales tax in effect in such state. Property collected for delivery outside of the United States by a freight forwarder who is registered with the Transportation Security Administration ("TSA") is not subject to New York sales tax.

MEDIATION AND ARBITRATION PROCEDURES

(a) Within 30 days of written notice that there is a dispute, the parties or their authorized and empowered representatives shall meet by telephone and/or in person to mediate their differences. If the parties agree, a mutually acceptable mediator shall be selected and the parties will equally share such mediator's fees. The mediator shall be a retired judge or an attorney familiar with commercial law and trained in or qualified by experience in handling mediations. Any communications made during the mediation process shall not be admissible in any subsequent arbitration, mediation or judicial proceeding. All proceedings and any resolutions thereof shall be confidential, and the terms governing arbitration set forth in paragraph (c) below shall govern.

(b) If mediation does not resolve all disputes between the parties, or in any event no longer than 60 days after receipt of the written notice of dispute referred to above, the parties shall submit the dispute for binding arbitration before a single neutral arbitrator. Such arbitrator shall be a retired judge or an attorney familiar with commercial law and trained in or qualified by experience in handling arbitrations. Such arbitrator shall make all appropriate disclosures required by law. The arbitrator shall be drawn from a panel of a national arbitration service agreed to by the parties, and shall be selected as follows: (i) If the national arbitration service has specific rules or procedures, those rules or procedures shall be followed; (ii) If the national arbitration service does not have rules or procedures for the selection of an arbitrator, the arbitrator shall be an individual jointly agreed to by the parties. If the parties cannot agree on a national arbitration service, the arbitration shall be conducted by the American Arbitration Association, and the arbitrator shall be selected in accordance with the Rules of the American Arbitration Association. The arbitrator's award shall be in writing and shall set forth findings of fact and legal conclusions.

(c) Unless otherwise agreed to by the parties or provided by the published rules of the national arbitration service:

(i) the arbitration shall occur within 60 days following the selection of the arbitrator;

(ii) the arbitration shall be conducted in the designated location, as follows: (A) in any case in which the subject auction by Bonhams took place or was scheduled to take place in the State of New York or Connecticut or the Commonwealth of Massachusetts, the arbitration shall take place in New York City, New York; (B) in all other cases, the arbitration shall take place in the city of San Francisco, California; and

(iii) discovery and the procedure for the arbitration shall be as follows:

(A) All arbitration proceedings shall be confidential;

(B) The parties shall submit written briefs to the arbitrator no later than 15 days before the arbitration commences;

(C) Discovery, if any, shall be limited as follows: (i) Requests for no more than 10 categories of documents, to be provided to the requesting party within 14 days of written request thereof; (ii) No more than two (2) depositions per party, provided however, the deposition(s) are to be completed within one (1) day; (iii) Compliance with the above shall be enforced by the arbitrator in accordance with California law;

(D) Each party shall have no longer than eight (8) hours to present its position. The entire hearing before the arbitrator shall not take longer than three (3) consecutive days;

(E) The award shall be made in writing no more than 30 days following the end of the proceeding. Judgment upon the award rendered by the arbitrator may be entered by any court having jurisdiction thereof.

To the fullest extent permitted by law, and except as required by applicable arbitration rules, each party shall bear its own attorneys' fees and costs in connection with the proceedings and shall share equally the fees and expenses of the arbitrator.

LIMITED RIGHT OF RESCISSION

If within one (1) year from the date of sale, the original buyer (a) gives written notice to us alleging that the identification of Authorship (as defined below) of such lot as set forth in the **BOLD TYPE** heading of the catalog description of such lot (as amended by any saleroom notices or verbal announcements during the sale) is not substantially correct based on a fair reading of the catalog (including the terms of any glossary contained therein), and (b) within 10 days after such notice returns the lot to us in the same condition as at the time of sale, and (c) establishes the allegation in the notice to our satisfaction (including by providing one or more written opinions by recognized experts in the field, as we may reasonably require), then the sale of such lot will be rescinded and, unless we have already paid to the consignor monies owed him in connection with the sale, the original purchase price will be refunded.

If, prior to receiving such notice from the original buyer alleging such defect, we have paid the consignor monies owed him in connection with the sale, we shall pay the original buyer the amount of our commissions, any other sale proceeds to which we are entitled and applicable taxes received from the buyer on the sale and make demand on the consignor to pay the balance of the original purchase price to the original buyer. Should the consignor fail to pay such amount promptly, we may disclose the identity of the consignor and assign to the original buyer our rights against the consignor with respect to the lot the sale of which is sought to be rescinded. Upon such disclosure and assignment, any liability of Bonhams as consignor's agent with respect to said lot shall automatically terminate.

The foregoing limited right of rescission is available to the original buyer only and may not be assigned to or relied upon

Conditions of sale - Continued

by any subsequent transferee of the property sold. The buyer hereby accepts the benefit of the consignor's warranty of title and other representations and warranties made by the consignor for the buyer's benefit. Nothing in this section shall be construed as an admission by us of any representation of fact, express or implied, obligation or responsibility with respect to any lot. THE BUYER'S SOLE AND EXCLUSIVE REMEDY AGAINST BONHAMS FOR ANY REASON WHATSOEVER IS THE LIMITED RIGHT OF RESCISSION DESCRIBED IN THIS SECTION.

"Authorship" means only the identity of the creator, the period, culture and source or origin of the lot, as the case may be, as set forth in the **BOLD TYPE** heading of the print catalog entry. The right of rescission does not extend to: (a) works of art executed before 1870 (unless these works are determined to be counterfeits created since 1870), as this is a matter of current scholarly opinion which can change; (b) titles, descriptions, or other identification of offered lots, which information normally appears in lower case type below the **BOLD TYPE** heading identifying the Authorship; (c) Authorship of any lot where it was specifically mentioned that there exists a conflict of specialist or scholarly opinion regarding the Authorship of the lot at the time of sale; (d) Authorship of any lot which as of the date of sale was in accordance with the then generally-accepted opinion of scholars and specialists regarding the same; or (e) the identification of periods or dates of creation in catalog descriptions which may be proven inaccurate by means of scientific processes that are not generally accepted for use until after publication of the catalog in which the property is offered or that were unreasonably expensive or impractical to use at the time of such publication.

LIMITATION OF LIABILITY

EXCEPT AS EXPRESSLY PROVIDED ABOVE, ALL PROPERTY IS SOLD "AS IS." NEITHER BONHAMS NOR THE CONSIGNOR MAKES ANY REPRESENTATION

OR WARRANTY, EXPRESS OR IMPLIED, AS TO THE MERCHANTABILITY, FITNESS OR CONDITION OF THE PROPERTY OR AS TO THE CORRECTNESS OF DESCRIPTION, GENUINENESS, ATTRIBUTION, PROVENANCE OR PERIOD OF THE PROPERTY OR AS TO WHETHER THE BUYER ACQUIRES ANY COPYRIGHTS OR OTHER INTELLECTUAL PROPERTY RIGHTS IN LOTS SOLD OR AS TO WHETHER A WORK OF ART IS SUBJECT TO THE ARTIST'S MORAL RIGHTS OR OTHER RESIDUAL RIGHTS OF THE ARTIST. THE BUYER EXPRESSLY ACKNOWLEDGES AND AGREES THAT IN NO EVENT SHALL BONHAMS BE LIABLE FOR ANY DAMAGES INCLUDING, WITHOUT LIMITATION, ANY COMPENSATORY, INCIDENTAL OR CONSEQUENTIAL DAMAGES. IN NO EVENT SHALL THE AGGREGATE LIABILITY OF BONHAMS AND ITS CONSIGNOR TO A PURCHASER EXCEED THE PURCHASE PRICE ACTUALLY PAID FOR A DISPUTED ITEM OF PROPERTY.

Seller's guide

SELLING AT AUCTION

Bonhams can help you every step of the way when you are ready to sell art, antiques and collectible items at auction. Our regional offices and representatives throughout the US are available to service all of your needs. Should you have any further questions, please visit our website at www.bonhams.com/us for more information or call our Client Services Department at +1 (323) 850 7500.

AUCTION ESTIMATES

The first step in the auction process is to determine the auction value of your property. Bonhams' world-renowned specialists will evaluate your special items at no charge and in complete confidence. You can obtain an auction estimate in many ways:

- Attend one of our Auction Evaluation Events held regularly at our galleries and in other major metropolitan areas. The updated schedule for Bonhams Auction Evaluation Events is available at www.bonhams.com/us.
- Call our Client Services Department to schedule a private appointment at one of our galleries. If you have a large collection, our specialists can travel, by appointment, to evaluate your property on site.
- Send clear photographs to us of each individual item, including item dimensions and other pertinent information with each picture. Photos should be sent to Bonhams' address in envelopes marked as "photo auction estimate". Alternatively, you can submit your request using our online form at www.bonhams.com/us. Digital images may be attached to the form. Please limit your images to no more than five (5) per item.

CONSIGNING YOUR PROPERTY

After you receive an estimate, you may consign your property to us for sale in the next appropriate auction. Our staff assists you throughout the process, arranging transportation of your items to our galleries (at the consignor's expense), providing a detailed inventory of your consignment, and reporting the prices realized for each lot. We provide secure storage for your property in our warehouses and all items are insured throughout the auction process. You will receive payment for your property approximately 35 days after completion of sale.

Sales commissions vary with the potential auction value of the property and the particular auction in which the property is offered. Please call us for commission rates.

PROFESSIONAL APPRAISAL SERVICES

Bonhams' specialists conduct insurance and fair market value appraisals for private collectors, corporations, museums, fiduciaries and government entities on a daily basis. Insurance appraisals, used for insurance purposes, reflect the cost of replacing property in today's retail market. Fair market value appraisals are used for estate, tax and family division purposes and reflect prices paid by a willing buyer to a willing seller.

When we conduct a private appraisal, our specialists will prepare a thorough inventory listing of all your appraised property by category. Valuations, complete descriptions and locations of items are included in the documentation.

Appraisal fees vary according to the nature of the collection, the amount of work involved, the travel distance, and whether the property is subsequently consigned for auction.

Our appraisers are available to help you anywhere and at any time. Please call our Client Services Department to schedule an appraisal.

ESTATE SERVICES

Since 1865, Bonhams has been serving the needs of fiduciaries – lawyers, trust officers, accountants and executors – in the disposition of large and small estates. Our services are specially designed to aid in the efficient appraisal and disposition of fine art, antiques, jewelry, and collectibles. We offer a full range of estate services, ranging from flexible financial terms to tailored accounting for heirs and their agents to world-class marketing and sales support.

For more information or to obtain a detailed Trust and Estates package, please visit our website at www.bonhams.com/us or contact our Client Services Department.

Buyer's guide

BIDDING & BUYING AT AUCTION

Whether you are an experienced bidder or an enthusiastic novice, auctions provide a stimulating atmosphere unlike any other. Bonhams previews and sales are free and open to the public. As you will find in these directions, bidding and buying at auction is easy and exciting. Should you have any further questions, please visit our website at www.bonhams.com or call our Client Services Department at +1 (323) 850 7500.

Catalogs

Before each auction we publish illustrated catalogs that include dates and times for previews and auctions. Our catalogs also provide descriptions and estimated values for each "lot." A lot may refer to a single item or to a group of items auctioned together. We offer our catalogs by subscription or by single copy. For information on subscribing to our catalogs, you may refer to the subscription form in this catalog, call our Client Services Department, or visit our website at www.bonhams.com/us.

Previews

Auction previews are your chance to inspect each lot prior to the auction. We encourage you to look closely and examine each object on which you may want to bid so that you will know as much as possible about it. Items are sold "as is" and with all faults; illustrations in our catalogs, website and other materials are provided for identification only. At the previews, our staff is always available to answer your questions and guide you through the auction process. Condition reports may be available upon request.

Estimates

Bonhams catalogs include estimates for each lot, exclusive of buyer's premium and tax. The estimates are provided as an approximate guide to current market value and should not be interpreted as a representation or prediction of actual selling prices. They are determined well in advance of a sale and are subject to revision. Please contact us should you have any questions about value estimates.

Reserves

All lots in a catalog are subject to a reserve unless otherwise indicated. The reserve is the minimum price that the seller is willing to accept for a lot. This amount is confidential and does not exceed the low estimated value.

BIDDING AT AUCTION

At Bonhams, you can bid in many ways: in person, via absentee bid, over the phone, or via Bonhams' online bidding facility. Absentee bids can be submitted in person, online, via fax or via email.

A valid Bonhams client account is required to participate in bidding activity. You can obtain registration information online, at the reception desk or by calling our Client Services Department.

By bidding at auction, whether in person or by agent, by absentee bid, telephone, online or other means, the buyer or bidder agrees to be bound by the Conditions of Sale.

Lots are auctioned in consecutive numerical order as they appear in the catalog. Bidding normally begins below the low estimate. The auctioneer will accept bids from interested parties present in the saleroom, from telephone bidders, and from absentee bidders who have left written bids in advance of the sale. The auctioneer may also execute bids on behalf of the consignor up to the amount of the reserve, but never above it.

We assume no responsibility for failure to execute bids for any reason whatsoever.

In Person

If you are planning to bid at auction, you will need to register at the reception desk in order to receive a numbered bid card. To place a bid, hold up your card so that the auctioneer can clearly see it. Decide on the maximum amount that you wish to pay, exclusive of buyer's premium and tax, and continue bidding until your bid prevails or you reach your limit. If you are the successful bidder on a lot, the auctioneer will acknowledge your paddle number and bid amount.

Absentee Bids

As a service to those wishing to place bids, we may at our discretion accept bids without charge in advance of sale by telephone, by facsimile or in writing on bidding forms available from us. "Buy" bids will not be accepted; all bids must state the highest bid price the bidder is willing to pay. Our auction staff will try to bid just as you would, with the goal of obtaining the

item at the lowest bid price possible. In the event identical bids are submitted, the earliest bid submitted will take precedence. Absentee bids shall be executed in competition with other absentee bids, any applicable reserve, and bids from other auction participants. A friend or agent may place bids on your behalf, provided that we have received your written authorization prior to the sale. Absentee bid forms are available in our catalogs, online at www.bonhams.com/us, and at our San Francisco, Los Angeles and New York galleries.

By Telephone

Under special circumstances, we can arrange for you to bid by telephone. To arrange for a telephone bid, please contact our Client Services Department a minimum of 24 hours prior to the sale.

Online

Web users may place absentee bids online from anywhere in the world. To bid online, please visit our website at www.bonhams.com/us.

We are pleased to make our live online bidding facility available to bidders in this sale.

Additional terms and conditions of sale relating to online bidding will apply. Please see www.bonhams.com/25798 or contact the Client Services Department to obtain information and learn how you can register and bid online in this sale.

Bid Increments

Bonhams generally uses the following increment multiples as bidding progresses:

\$50-200	by \$10s
\$200-500	by \$20/50/80s
\$500-1,000	by \$50s
\$1,000-2,000	by \$100s
\$2,000-5,000	by \$200/500/800s
\$5,000-10,000	by \$500s
\$10,000-20,000	by \$1,000s
\$20,000-50,000	by \$2,000/5,000/8,000s
\$50,000-100,000	by \$5,000s
\$100,000-200,000	by \$10,000s
above \$200,000	at auctioneer's discretion

The auctioneer may split or reject any bid at any time at his or her discretion as outlined in the Conditions of Sale.

Currency Converter

Solely for the convenience of bidders, a currency converter may be provided at Bonhams sales. The rates quoted for conversion of other currencies to U.S. Dollars are indications only and should not be relied upon by a bidder, and neither Bonhams nor its agents shall be responsible for any errors or omissions in the operation or accuracy of the currency converter.

Buyer's Premium

A buyer's premium is added to the winning bid price of each individual lot purchased, at the rates set forth in the Conditions of Sale. The winning bid price plus the premium constitute the purchase price for the lot. Applicable sales taxes are computed based on this figure, and the total becomes your final purchase price.

Unless specifically illustrated and noted, fine art frames are not included in the estimate or purchase price. Bonhams accepts no liability for damage or loss to frames during storage or shipment.

All sales are final and subject to the Conditions of Sale found in our catalogs, on our website, and available at the reception desk.

Payment

All buyers are asked to pay and pick up by 3pm on the business day following the auction. Payment may be made to Bonhams by cash, checks drawn on a U.S. bank, money order, wire transfer, or by Visa, MasterCard, American Express or Discover credit or charge card or debit card. All items must be paid for within 5 business days of the sale. Please note that payment by personal or business check may result in property not being released until purchase funds clear our bank.

Sales Tax

Residents of states listed in Paragraph 1 of the Conditions of Sale must pay applicable sales tax. Other state or local taxes (or compensation use taxes) may apply. Sales tax will be automatically added to the invoice unless a valid resale number has been furnished or the property is shipped via common carrier to destinations outside the states listed in

the Conditions of Sale. If you wish to use your resale license please contact Cashiers for our form.

Shipping & Removal

See page 163

Bonhams can accommodate shipping for certain items. Please contact our Cashiers Department for more information or to obtain a quote. Refer to Conditions of Sale for special terms governing the shipment of Arms and Wine. Shipments are made during weekday business hours up to four weeks after payment is received. Carriers are not permitted to deliver to P.O. Boxes.

International buyers are responsible for all import/export customs duties and taxes. An invoice stating the actual purchase price(s) will accompany all international purchases.

Simultaneous sale property collection notice:

If this sale previews in multiple cities, please see the title page for details regarding final location of property for collection.

Auction Results

Auction results are usually available on the next business day following the sale or online at www.bonhams.com/us.

Offsite sold Property Storage Information

Please note all following lots, marked with the symbol 'W' in the catalogue, will be removed to Box Pack & Ship, if not removed on the day of the sale. For the convenience of the successful bidder of one or more of these lots, all purchased lots will be transferred to our offsite storage together. Please read the Conditions of Sale regarding the removal of sold lots.

Bonhams' storage and logistics partner is Box Pack & Ship, a well-known organization that specializes in crating, packaging and shipping.

Our storage and logistics partnership provides several beneficial services. The first being 5 days of free storage.

- During this auction, clients will be expected to pick up all property from Bonhams by 5pm on Friday October 11, 2019. Clients can begin picking up from Box, Pack and Ship on October 16, 2019, 9am.
- All items listed at the beginning of our printed catalog, along with all other items purchased, if not removed immediately after the sale, will be transferred to Box Pack & Ship warehouse. With an appointment made 24 hours in advance, clients can pick up their property at 220 W. Ivy Ave, Unit C in Inglewood.
- Box Pack & Ship will charge an uplift fee to transport your items to their warehouse. Small items that can be handled easily by one person will be charged \$50. Larger items that can still be handled by one person will be charged \$85. Large items that require two people to handle will be charged \$100. Charges will be payable directly to Box Pack & Ship. Should you choose to have Box Pack & Ship ship or deliver your property, this uplift fee will be waived.
- Clients will have 5 days of free storage to retrieve their property or make arrangements with Box Pack & Ship to pack and ship their property. Storage fees will begin to accrue on the 6th day of storage.
- Retrieval from the offsite warehouse is by appointment only. Clients must call 24 hours in advance. Clients can utilize the delivery services offered by Box Pack & Ship or clients may make their own arrangements. Please call +1 (800) 474-7447.
- Box Pack & Ship is available to ship internationally. They offer importing and exporting services. Clients can select either airfreight or ocean cargo delivery options, which range from door-to-port, door-to-airport with door-to-door service also available. Clients can ship one item, co-load or container load at a discounted rate through Box Pack & Ship. Please call +1 (800) 474-7447 for more information.
- All purchases not designated for offsite storage will remain onsite at Bonhams for a period of 21 days beginning the date of the auction. During this 21 day period, clients may remove such property themselves, make arrangements with the Bonhams packaging and shipping department or provide their own shipper for removal of all property. If a client does not retrieve his/her property or finalize shipping arrangements within 21 days, the purchases will be removed to the offsite storage facility of Box Pack & Ship. Again, uplift charges for packing and transport from our gallery to Box Pack & Ship will be charged by Box Pack & Ship.
- Payment of the hammer price, premium and any applicable sales taxes must be made directly to Bonhams prior to the release of property. Any removal, storage or other fees due to Box Pack & Ship should be made directly to Box Pack & Ship.
- Change of shipping address must be authorized by Bonhams Revenue Manager, Martin Romero, before Box Pack & Ship will be permitted to re-route your purchases.

LOTS TO BE REMOVED TO STORAGE:

1	95
2	96
3	99
4	153
6	155
7	156
10	157
37	158
38	159
39	160
40	161
41	162
42	163
44	164
55	165
56	166
57	167
60	169
61	170
62	174
64	175
65	230
66	233
67	234
81	260
87	272
88	273
89	278
90	279
91	280
92	281
93	282
94	

Bonhams Specialist Departments

19th Century Paintings

London
Charles O' Brien
+44 20 7468 8360
New York
Madalina Lazen
+1 212 644 9108

20th Century British Art

London
Matthew Bradbury
+44 20 7468 8295

20th Century Fine Art

San Francisco
Sonja Moro
+1 415 694 9002

Aboriginal Art

Australia
Francesca Cavazzini
+61 2 8412 2222

African, Oceanic & Pre-Columbian Art

Los Angeles
Fredric W. Backlar
+1 323 436 5416 •

American Paintings

New York
Jennifer Jacobsen
+1 917 206 1699

Antiquities

London
Francesca Hickin
+44 20 7468 8226

Antique Arms & Armour

London
David Williams
+44 20 7393 3807

Valuations Trusts & Estates

London
Harvey Cammell
+44 (0) 20 7468 8340
New York
Sherri Cohen
+1 917 206 1671
Los Angeles
Leslie Wright
+1 323 436 5408
Joseph Francaviglia
+1 323 436 5443
Lydia Ganley
+1 323 436 4496
San Francisco
Victoria Richardson
+1 415 503 3207
Celeste Smith
+1 415 503 3214

Australian Art

Australia
Merryn Schriever
+61 2 8412 2222 Alex Clark
+61 3 8640 4088

Australian Colonial Furniture and Australiana

+61 2 8412 2222

Books, Maps & Manuscripts

London
Matthew Haley
+44 20 7393 3817
New York
Ian Ehling
+1 212 644 9094
Darren Sutherland
+1 212 461 6531
Los Angeles
Catherine Williamson
+1 323 436 5442
San Francisco
Adam Stackhouse
+1 415 503 3266

British & European Glass

London
Fergus Gambon
+44 20 7468 8245

British Ceramics

London
Fergus Gambon
+44 20 7468 8245

California & Western Paintings & Sculpture

Los Angeles
Scot Levitt
+1 323 436 5425
Kathy Wong
+1 323 436 5415
San Francisco
Aaron Bastian
+1 415 503 3241

Carpets

London
Helena Gumley-Mason
+44 20 8393 2615

Chinese & Asian Art

London
Asaph Hyman
+44 20 7468 5888
Rosangela Assennato
+44 20 7393 3883
Edinburgh
Ian Glennie
+44 131 240 2299
New York
Bruce MacLaren
+1 917 206 1677
Los Angeles
Rachel Du
+1 323 436 5587
San Francisco
Dessa Goddard
+1 415 503 3333
Hong Kong
Xibo Wang
+852 3607 0010
Sydney
Yvett Klein
+61 2 8412 2231

Chinese Paintings

Hong Kong
Iris Miao
+852 3607 0011

Clocks

London
James Stratton
+44 20 7468 8364
New York
Jonathan Snellenburg
+1 212 461 6530

Coins & Medals

London
John Millensted
+44 20 7393 3914
Los Angeles
Paul Song
+1 323 436 5455

Entertainment Memorabilia

London
Katherine Schofield
+44 20 7393 3871
Los Angeles
Catherine Williamson
+1 323 436 5442
Dana Hawkes
+1 978 283 1518

European Ceramics

London
Sebastian Kuhn
+44 20 7468 8384

European Paintings

London
Charles O' Brien
+44 20 7468 8360
New York
Madalina Lazen
+1 212 644 9108
Los Angeles
Rocco Rich
+1 323 436 5410

European Sculptures & Works of Art

London
Michael Lake
+44 20 8963 6813

Furniture and Decorative Art

London
Thomas Moore
+44 20 8963 2816
Los Angeles
Angela Past
+1 323 436 5422
Anna Hicks
+1 323 436 5463
San Francisco
Jeffrey Smith
+1 415 215 7385

Greek Art

London
Anastasia Orfanidou
+44 20 7468 8356

Golf Sporting Memorabilia

Edinburgh
Kevin McGimpsey
Hamish Wilson
+44 131 240 0916

Irish Art

London
Penny Day
+44 20 7468 8366

Impressionist & Modern Art

London
India Phillips
+44 20 7468 8328
New York
Caitlyn Pickens
+1 212 644 9135
Los Angeles
Kathy Wong
+1 323 436 5415

Indian, Himalayan & Southeast Asian Art

Hong Kong
Edward Wilkinson
+852 2918 4321
New York
Mark Rasmussen
+1 917 206 1688

Islamic & Indian Art

London
Oliver White
+44 20 7468 8303

Japanese Art

London
Suzannah Yip
+44 20 7468 8368
New York
Jeff Olson
+1 212 461 6516

Jewellery

London
Jean Ghika
+44 20 7468 8282
Emily Barber
+44 20 7468 8284
New York
Brett O'Connor
+1 212 461 6525
Caroline Morrissey
+1 212 644 9046
Camille Barbier
+1 212 644 9035
Los Angeles
Emily Waterfall
+1 323 436 5426
San Francisco
Shannon Beck
+1 415 503 3306
Hong Kong
Paul Redmayne
+852 3607 0006

Marine Art

London
Veronique Scorer
+44 20 7393 3962

Mechanical Music

London
Jon Baddeley
+44 20 7393 3872

**Modern & Contemporary
African Art**

London
Giles Peppiatt
+ 44 20 7468 8355
New York
Hayley Grundy
+1 917 206 1624

**Modern & Contemporary
Middle Eastern Art**

London
Nima Sagharchi
+44 20 7468 8342

**Modern & Contemporary
South Asian Art**

London
Tahmina Ghaffar
+44 207 468 8382

**Modern Decorative
Art + Design**

London
Mark Oliver
+44 20 7393 3856
New York
Benjamin Walker
+1 212 710 1306
Dan Tolson
+1 917 206 1611
Los Angeles
Jason Stein
+1 323 436 5466

Motor Cars

London
Tim Schofield
+44 20 7468 5804
New York
Rupert Banner
+1 212 461 6515
Eric Minoff
1 917 206 1630
Evan Ide
+1 917 340 4657
Los Angeles
Jakob Greisen
+1 415 503 3284
Michael Caimano
+1 929 666 2243
San Francisco
Mark Osborne
+1 415 503 3353
Europe
Phillip Kantor
+32 476 879 471

Automobilia

London
Toby Wilson
+44 20 8963 2842
Adrian Pipiros
+44 20 8963 2840

Motorcycles

London
Ben Walker
+44 20 8963 2819
James Stensel
+44 20 8963 2818
Los Angeles
Craig Mallery
+1 323 436 5470

Museum Services

San Francisco
Laura King Pfaff
+1 415 503 3210

Native American Art

Los Angeles
Ingmars Lindbergs
+1 415 503 3393
Kim Jarand
+1 323 436 5430

Natural History

Los Angeles
Claudia Florian
+1 323 436 5437
Thomas E. Lindgren
+1 310 469 8567 •

Old Master Pictures

London
Andrew Mckenzie
+44 20 7468 8261

Orientalist Art

London
Charles O'Brien
+44 20 7468 8360

Photography

New York
Laura Paterson
+1 917 206 1653

**Private Collections & House
Sales**

Harvey Cammell
+44 20 7468 8340
Charlie Thomas
+44 20 7468 8358

**Post-War and
Contemporary Art**

London
Ralph Taylor
+44 20 7447 7403
New York
Muys Snijders
+212 644 9020
Jacqueline Towers-Perkins
+1 212 644 9039
Lisa De Simone
+1 917 206 1607
Andrew Huber
+1 917 206 1633
Los Angeles
Sharon Squires
+1 323 436 5404
Laura Bjorstad
+1 323 436 5446

Prints and Multiples

London
Lucia Tro Santafe
+44 20 7468 8262
New York
Deborah Ripley
+1 212 644 9059
Los Angeles
Morisa Rosenberg
+1 323 447 9374

Russian Art

London
Daria Khristova
+44 20 7468 8334
New York
Yelena Harbick
+1 212 644 9136

Scientific Instruments

London
Jon Baddeley
+44 20 7393 3872
New York
Jonathan Snellenburg
+1 212 461 6530

Scottish Pictures

Edinburgh
Chris Brickley
+44 131 240 2297

Silver & Gold Boxes

London
Ellis Finch
+44 20 7393 3973

Sporting Guns

London
Patrick Hawes
+44 20 7393 3815

Space History

San Francisco
Adam Stackhouse
+1 415 503 3266

Travel Pictures

London
Veronique Scorer
+44 20 7393 3962

**Watches &
Wristwatches**

London
Jonathan Darracott
+44 20 7447 7412
New York
Jonathan Snellenburg
+1 212 461 6530
Hong Kong
Tim Bourne
+852 3607 0021

Whisky

Edinburgh
Martin Green
+44 131 225 2266
Hong Kong
Daniel Lam
+852 2918 4321

Wine

London
Richard Harvey
+44 20 7468 5811
San Francisco
Christine Ballard
+1 415 503 3221
Hong Kong
Daniel Lam
+852 2918 4321

Client Services Departments**U.S.A.****San Francisco**

(415) 861 7500
(415) 861 8951 fax
Monday - Friday, 9am to 5pm

Los Angeles

(323) 850 7500
(323) 850 6090 fax
Monday - Friday, 9am to 5pm

New York

(212) 644 9001
(212) 644 9009 fax
Monday - Friday, 9am to 5pm

Toll Free

(800) 223 2854

U.K.

Monday to Friday 8.30 to 6.00
+44 (0) 20 7447 7447

Bids

+44 (0) 20 7447 7447
+44 (0) 20 7447 7401 fax
To bid via the internet please visit
bonhams.com

• Indicates independent contractor

Bonhams Global Network

International Salerooms

London

101 New Bond Street
London W1S 1SR
+44 20 7447 7447
+44 20 7447 7400 fax

New York

580 Madison Avenue
New York, NY 10022
+1 (212) 644 9001
+1 (212) 644 9007 fax

Hong Kong

Suite 2001
One Pacific Place
88 Queensway
Admiralty
Hong Kong
+852 2918 4321
+852 2918 4320 fax

London

Montpelier Street London
SW7 1HH
+44 20 7393 3900
+44 20 7393 3905 fax

Offices and Associated Companies

Africa

Nigeria

Neil Coventry
+234 (0) 8110 033 792
+27 (0) 7611 20171
neil.coventry@
bonhams.com

South Africa - Johannesburg

Penny Culverwell
+27 (0) 71 342 2670
penny.culverwell@
bonhams.com

Australia

Sydney

97-99 Queen Street,
Woollahra, NSW 2025
Australia
+61 (0) 2 8412 2222
+61 (0) 2 9475 4110 fax
info.aus@bonhams.com

Melbourne

Como House
Como Avenue
South Yarra
Melbourne VIC 3141
Australia
+61 (0) 3 8640 4088
+61 (0) 2 9475 4110 fax
info.aus@bonhams.com

Asia

Beijing

Vivian Zhang
Unit S102A, Beijing
Lufthansa Center,
50 Liangmaqiao Road,
Chaoyang District,
Beijing 100125, China
+86 (0) 10 8424 3188
beijing@bonhams.com

Singapore

Bernadette Rankine
11th Floor, Wisma Atria
435 Orchard Road
Singapore 238877
+65 (0) 6701 8038
+65 (0) 6701 8001 fax
bernadette.rankine@
bonhams.com

Taiwan

Jenny Tsai
37th Floor,
Taipei 101 Tower
No. 7 Xinyi Road,
Section 5
Taipei, 100
+886 2 8758 2898
+886 2 8758 2897 fax
taiwan@bonhams.com

Europe

Austria

Thomas Kamm
thomas.kamm@
bonhams.com
+49 900 89 2420 5812
austria@bonhams.com

Belgium

Christine De Schaetzen
christine.deschaetzen@
bonhams.com
Boulevard Saint
Michel 101
1040 Brussels
+32 (0) 2 736 5076
belgium@bonhams.com

France

Catherine Yaiche
catherine.yaiche@
bonhams.com
4 rue de la Paix
75002 Paris
+33 (0) 1 42 61 10 10
paris@bonhams.com

Germany - Cologne

Katharina Schmid
katharina.schmid@
bonhams.com
+49 (0) 221 9865 3419
+49 (0) 157 9234 6717
cologne@bonhams.com

Germany - Hamburg

Marie Becker Lingenthal
marie.beckerlingenthal@
bonhams.com
+49 (0) 17 4236 0022
hamburg@
bonhams.com

Germany - Munich

Thomas Kamm
thomas.kamm@
bonhams.com
Maximilianstrasse 52
80538 Munich
+49 (0) 89 2420 5812
munich@bonhams.com

Germany - Stuttgart

Katharina Schmid
katharina.schmid@
bonhams.com
Neue Brücke 2
New Bridge Offices
70173 Stuttgart
+49 (0) 711 2195 2640
+49 (0) 157 9234 6717
stuttgart@bonhams.com

Greece

7 Neofytou Vamva
Street
Athens 10674
+30 (0) 210 3636 404
athens@bonhams.com

Ireland

Kieran O'Boyle
kieran.oboyle@
bonhams.com
31 Molesworth Street
Dublin 2
+353 (0) 1 602 0990
ireland@bonhams.com

Italy - Milan

Luca Curradi
luca.curradi@
bonhams.com
Via Boccaccio 22
20123 Milano
+39 0 2 4953 9020
milan@bonhams.com

Italy - Rome

Emma Dalla Libera
emma.dallalibera@
bonhams.com
Via Sicilia 50
00187 Roma
+39 06 485 900
rome@bonhams.com

The Netherlands

Koen Samson
koen.samson@
bonhams.com
De Lairessestraat 154
1075 HL Amsterdam
+31 (0) 20 67 09 701
amsterdam@
bonhams.com

Portugal

Filipa De Andrade
filipa.deandrade@
bonhams.com
Rua Bartolomeu Dias
no160. 1o
Belem
1400-031 Lisbon
+351 218 293 291
portugal@bonhams.com

Spain - Barcelona & North

Teresa Ybarra
teresa.ybarra@
bonhams.com
+34 930 156 686
+34 680 347 606
barcelona@
bonhams.com

Spain - Madrid

Johann Leibbrandt
johann.leibbrandt@
bonhams.com
Núñez de Balboa
no 4-1C
28001 Madrid
+34 915 78 17 27

Switzerland - Geneva

Live Gallone Moeller
livie.gallonemoeller@
bonhams.com
Rue Etienne-Dumont 10
1204 Geneva
+41 22 300 3160
geneva@bonhams.com

Switzerland - Zurich

Andrea Bodmer
andrea.bodmer@
bonhams.com
Dreikönigstrasse 31a
8002 Zürich
+41 44 281 9535
zurich@bonhams.com

North America

USA

Representatives:

Arizona

Terri Adrian-Hardy
terri.hardy@
bonhams.com
+1 (602) 859 1843
arizona@bonhams.com

California

Central Valley
David Daniel
david.daniel@
bonhams.com
+1 (916) 364 1645
nevada@bonhams.com

California - Palm Springs

Brooke Sivo
brooke.sivo@
bonhams.com
+1 (760) 350 4255
palmsprings@
bonhams.com

California - San Diego

Brooke Sivo
brooke.sivo@
bonhams.com
+1 (760) 567 1744
sandiego@
bonhams.com

Colorado

Lance Vigil
lance.vigil@
bonhams.com
+1 (720) 355 3737
colorado@
bonhams.com

Florida

April Matteini
april.matteini@
bonhams.com
+1 (305) 978 2459
Alexis Butler
alexis.butler@
bonhams.com
+1 (305) 878 5366
miami@bonhams.com

Georgia

Mary Moore Bethea
mary.bethea@
bonhams.com
+1 (404) 842 1500
georgia@bonhams.com

Illinois & Midwest

Natalie B. Waechter
natalie.waechter@
bonhams.com
+1 (773) 267 3300
Shawn Marsh
shawn.marsh@
bonhams.com
+1 (773) 680 2881
chicago@bonhams.com

Massachusetts & New England

Amy Corcoran
amy.corcoran@
bonhams.com
+1 (617) 742 0909
boston@bonhams.com

Nevada

David Daniel
david.daniel@
bonhams.com
+1 (775) 831 0330
nevada@bonhams.com

New Mexico

Terri Adrian-Hardy
terri.hardy@
bonhams.com
+1 (602) 859 1843
newmexico@
bonhams.com

Oregon & Idaho

Sheryl Acheson
sheryl.acheson@
bonhams.com
+1 (971) 727 7797
oregon@bonhams.com

Edinburgh

22 Queen Street
Edinburgh
EH2 1JX
+44 131 225 2266
+44 131 220 2547 fax

Los Angeles

7601 W. Sunset Boulevard
Los Angeles
CA 90046
+1 (323) 850 7500
+1 (323) 850 6090 fax

San Francisco

220 San Bruno Avenue
San Francisco
CA 94103
+1 (415) 861 7500
+1 (415) 861 8951 fax

Texas - Dallas

Mary Holm
mary.holm@
bonhams.com
+1 (214) 557 2716
dallas@bonhams.com

Texas - Houston

Lindsay Davis
lindsay.davis@
bonhams.com
+1 (713) 855 7452
texas@bonhams.com

Virginia

Gertraud Hechl
gertraud.hechl@
bonhams.com
+1 (202) 422 2733
virginia@
bonhams.com

**Washington
& Alaska**

Heather O'Mahony
heather.omahony@
bonhams.com
+1 (206) 566 3913
seattle@
bonhams.com

**Washington DC
Mid-Atlantic Region**

Gertraud Hechl
gertraud.hechl@
bonhams.com
+1 (202) 422 2733
washingtonDC@
bonhams.com

Canada**Toronto, Ontario**

Kristin Kearney
340 King St East
2nd floor, Office 213
Toronto ON
M5A 1 KB
kristin.kearney@
bonhams.com
+1 (416) 462 9004
info.ca@
bonhams.com

Montreal, Quebec

+1 (514) 209 2377
info.ca@
bonhams.com

Middle East**Israel**

Joslyne Halibard
joslyne.halibard@
bonhams.com
+972 (0) 54 553 5337

**United
Kingdom****South East
England****Guildford**

Millmead,
Guildford,
Surrey GU2 4BE
+44 1483 504 030
guildford@
bonhams.com

Isle of Wight

+44 1273 220 000
isleofwight@
bonhams.com

Representative:

Brighton & Hove

Tim Squire-Sanders
+44 1273 220 000
hove@bonhams.com

West Sussex

+44 (0) 1273 220 000
sussex@
bonhams.com

**South West
England****Bath**

Queen Square House
Charlotte Street
Bath, BA1 2LL
+44 1225 788 988
bath@bonhams.com

Cornwall - Truro

36 Lemon Street
Truro
Cornwall
TR1 2NR
+44 1872 250 170
truro@bonhams.com

Exeter

The Lodge
Southernhay West
Exeter, Devon
EX1 1JG
+44 1392 425 264
exeter@bonhams.com

Tetbury

Eight Bells House
14 Church Street
Tetbury
Gloucestershire
GL8 8JG
+44 1666 502 200
tetbury_office@
bonhams.com

Representatives:

Dorset

Matthew Lacey
+44 1935 815 271

**East Anglia and
Bury St. Edmunds**

Michael Steel
+44 1284 716 190
bury@bonhams.com

Norfolk

The Market Place
Reepham
Norfolk, NR10 4JJ
+44 1603 871 443
norfolk@
bonhams.com

Midlands**Knowle**

The Old House
Station Road
Knowle, Solihull
West Midlands
B93 0HT
+44 1564 776 151
knowle@
bonhams.com

Oxford

Banbury Road
Shipton on Cherwell
Kidlington OX5 1JH
+44 1865 853 640
oxford@
bonhams.com

Bonhams MPH
The Guard House
Bicester Heritage
Bicester, Oxfordshire
OX26 5HA
+44 1869 229 477
mph@bonhams.com

**Yorkshire & North
East England****Leeds**

The West Wing
Bowcliffe Hall
Bramham
Leeds, LS23 6LP
+44 113 234 5755
leeds@bonhams.com

North West England**Chester**

2 St Johns Court
Vicars Lane
Chester, CH1 1QE
+44 1244 313 936
chester@
bonhams.com

Manchester

The Stables
213 Ashley Road
Hale, WA15 9TB
+44 161 927 3822
manchester@
bonhams.com

Channel Islands**Jersey**

La Chasse
La Rue de la Vallee
St Mary
Jersey, JE3 3DL
+44 1534 722 441
jersey@bonhams.com

Representative:

Guernsey

+44 1481 722 448
guernsey@
bonhams.com

Scotland**Bonhams West
of Scotland**

Kirkhill House
Broom Road East
Newton Mearns
Glasgow, G77 5LL
+44 141 223 8866
glasgow@
bonhams.com

Wales

Representatives:

Cardiff

Jeff Muse
+44 2920 727 980
cardiff@bonhams.com

Auction Registration Form

(Attendee / Absentee / Online / Telephone Bidding)

Please circle your bidding method above.

--	--	--	--

Paddle number (for office use only)

General Notice: This sale will be conducted in accordance with Bonhams Conditions of Sale, and your bidding and buying at the sale will be governed by such terms and conditions. Please read the Conditions of Sale in conjunction with the Buyer's Guide relating to this sale and other published notices and terms relating to bidding. Payment by personal or business check may result in your property not being released until purchase funds clear our bank. Checks must be drawn on a U.S. bank.

Notice to Absentee Bidders: In the table below, please provide details of the lots on which you wish to place bids at least 24 hours prior to the sale. Bids will be rounded down to the nearest increment. Please refer to the Buyer's Guide in the catalog for further information relating to instructions to Bonhams to execute absentee bids on your behalf. Bonhams will endeavor to execute bids on your behalf but will not be liable for any errors or non-executed bids.

Notice to First Time Bidders: New clients are requested to provide photographic proof of ID - passport, driving license, ID card, together with proof of address - utility bill, bank or credit card statement etc. Corporate clients should also provide a copy of their articles of association / company registration documents, together with a letter authorizing the individual to bid on the company's behalf. Failure to provide this may result in your bids not being processed. For higher value lots you may also be asked to provide a bankers reference.

Notice to online bidders: If you have forgotten your username and password for www.bonhams.com, please contact Client Services.

If successful

- I will collect the purchases myself
- Please contact me with a shipping quote (if applicable)
- I will arrange a third party to collect my purchase(s)

Please email or fax the completed Registration Form and requested information to:

Bonhams Client Services Department
 580 Madison Avenue
 New York, New York 10022
 Tel +1 (212) 644 9001
 Fax +1 (212) 644 9009
bids.us@bonhams.com

Bonhams

Sale title: The Contents Of A Virginian Country House		Sale date: October 10, 2019	
Sale no. 25798		Sale venue: Los Angeles	
General Bid Increments:			
\$10 - 200by 10s		\$10,000 - 20,000by 1,000s	
\$200 - 500by 20 / 50 / 80s		\$20,000 - 50,000by 2,000 / 5,000 / 8,000s	
\$500 - 1,000by 50s		\$50,000 - 100,000by 5,000s	
\$1,000 - 2,000by 100s		\$100,000 - 200,000by 10,000s	
\$2,000 - 5,000by 200 / 500 / 800s		above \$200,000at the auctioneer's discretion	
\$5,000 - 10,000by 500s		The auctioneer has discretion to split any bid at any time.	
Customer Number		Title	
First Name		Last Name	
Company name (to be invoiced if applicable)			
Address			
City		County / State	
Post / Zip code		Country	
Telephone mobile		Telephone daytime	
Telephone evening		Fax	
Telephone bidders: indicate primary and secondary contact numbers by writing ① or ② next to the telephone number.			
E-mail (in capitals) _____			
By providing your email address above, you authorize Bonhams to send you marketing materials and news concerning Bonhams and partner organizations. Bonhams does not sell or trade email addresses.			
I am registering to bid as a private client <input type="checkbox"/>		I am registering to bid as a trade client <input type="checkbox"/>	
Resale: please enter your resale license number here _____ We may contact you for additional information.			

SHIPPING	
Shipping Address (if different than above):	
Address: _____	Country: _____
City: _____	Post/ZIP code: _____

Please note that all telephone calls are recorded.

Type of bid (A-Absentee, T-Telephone)	Lot no.	Brief description (In the event of any discrepancy, lot number and not lot description will govern.) If you are bidding online there is no need to complete this section.	MAX bid in US\$ (excluding premium and applicable tax) Emergency bid for telephone bidders only*

You instruct us to execute each absentee bid up to the corresponding bid amount indicated above.

* Emergency Bid: A maximum bid (exclusive of Buyer's Premium and tax) to be executed by Bonhams **only** if we are unable to contact you by telephone or should the connection be lost during bidding.

BY SIGNING THIS FORM YOU AGREE THAT YOU HAVE READ AND UNDERSTAND OUR CONDITIONS OF SALE AND SHALL BE LEGALLY BOUND BY THEM, AND YOU AGREE TO PAY THE BUYER'S PREMIUM, ANY APPLICABLE TAXES, AND ANY OTHER CHARGES MENTIONED IN THE BUYER'S GUIDE OR CONDITIONS OF SALE. THIS AFFECTS YOUR LEGAL RIGHTS.	
Your signature: _____	Date: _____





Bonhams
7601 W. Sunset Boulevard
Los Angeles, CA 90046

+1 323 850 7500
bonhams.com

AUCTIONEERS SINCE 1793